

**Missouri
Agricultural Liming
Materials Report**

January 1 to June 30, 2007

Agricultural Experiment Station

University of Missouri-Columbia

This bulletin is a detailed report of official samples obtained under the Missouri Agricultural Liming Materials Law collected from January 1 through June 30, 2007. There were 674 official samples collected in this period. All samples are analyzed to determine fineness of grind, calcium carbonate equivalent(CCE), and magnesium content (Mg). Effective neutralizing material (ENM) and effective magnesium (EMg) are calculated from this information, as prescribed by Rule, for each dry sample which meets the minimum specifications of at least 90% passing a U.S. No. 8 sieve and minimum 65% CCE. Products not meeting minimum specifications cannot be sold as agricultural liming materials. Twenty-eight deficient samples are reported, twenty-seven for excessive coarseness and one for low CCE. There were four "stop sale" order's issued against producer stockpiles: four for excessive coarseness. Corrective actions taken by the producers have resulted in the release of three of the issued "stop sale" orders.

Table 1 lists registered producers and samples obtained at production sites. Table 2 lists samples obtained from retail distributor stockpiles, by producer.

MISSOURI AGRICULTURAL LIMING MATERIALS TONNAGE
REPORTED SINCE AUGUST 13, 1976

YEAR	SPRING	FALL	TOTAL
1976	-----	2,514,500	-----
1977	1,590,700	1,166,600	2,757,300
1978	1,116,100	2,546,250	3,662,350
1979	975,300	3,068,900	4,044,200
1980	1,431,000	2,266,900	3,697,900
1981	1,336,750	1,228,350	2,565,100
1982	825,100	1,029,000	1,854,100
1983	872,700	1,154,700	2,027,400
1984	595,725	899,459	1,495,185
1985	611,050	783,575	1,394,625
1986	967,375	646,115	1,613,490
1987	1,104,358	1,558,171	2,662,529
1988	1,036,917	1,605,444	2,642,361
1989	939,831	1,586,398	2,526,229
1990	504,100	1,204,551	1,708,651
1991	646,864	835,603	1,482,467
1992	859,648	771,536	1,631,184
1993	397,607	686,345	1,083,952
1994	681,464	967,450	1,648,914
1995	720,140	1,207,663	1,927,803
1996	704,151	886,627	1,590,778
1997	779,876	1,063,760	1,843,636
1998	626,186	1,048,308	1,674,494
1999	606,847	1,557,259	2,164,106
2000	886,861	996,123	1,882,984
2001	512,964	1,311,614	1,824,578
2002	696,473	1,079,130	1,775,603
2003	596,438	829,574	1,426,012
2004	629,642	748,503	1,378,145
2005	667,212	659,215	1,326,427
2006	839,305	774,665	1,613,969
2007	415,151*	784,849*	1,200,000*

* PRELIMINARY ESTIMATE

3
TABLE 1

AGRICULTURAL LIMING MATERIALS SAMPLED FROM
JANUARY 1 THROUGH JUNE 30, 2007

Distributor	Date Sampled	U.S. Sieve Fraction, %				%CCE	%Mg	Fineness Factor	Pounds/Ton	
		+8	-8+40	-40+60	-60				ENM	EMg
76 QUARRY, MANSFIELD, MO										
Stockpile #1										
Lab #0323	04-16-07	0.2	41.5	11.0	47.3	86.7	10.2	64.3	446	131
Lab #0327	04-17-07	0.2	38.9	9.0	51.9	86.7	10.1	67.0	465	135
ADRIAN QUARRY LLC, ADRIAN, MO										
Stockpile #4										
Lab #0302	04-09-07	0.4	48.2	12.9	38.5	90.7	0.4	58.3	423	5
Lab #0640	06-05-07	0.8	53.9	8.6	36.7	90.3	0.3	55.3	400	3
Stockpile #5										
Lab #0303	04-09-07	1.6	50.7	10.0	37.7	89.1	0.3	56.4	402	3
Lab #0641	06-05-07	1.4	49.9	11.8	36.9	90.1	0.3	56.5	407	3
AIRGAS - MID AMERICA, MOUNTAIN GROVE, MO										
ALBY QUARRY, CARLINVILLE, IL										
ALLEN QUARRIES INC, LOCKWOOD, MO										
Stockpile #1										
Lab #0126	03-06-07	5.4	52.0	13.3	29.3	95.4	0.9	50.3	384	9
ANNA QUARRY, ANNA, IL										
Stockpile #1										
Lab #0191	03-21-07	0.2	42.5	12.9	44.4	92.3	2.8	62.8	463	35
Lab #0476	05-16-07	3.0	44.9	13.5	38.6	92.5	3.3	57.9	429	38
APAC-MISSOURI, INC - BAGNELL 13, ELDON, MO										
Stockpile #1										
Lab #0346	04-17-07	0.4	40.6	15.5	43.5	94.2	10.9	63.0	474	137
Stockpile #2										
Lab #0057	02-14-07	5.2	34.7	16.2	43.9	90.3	10.7	62.3	450	133
Lab #0347	04-17-07	1.2	42.3	14.4	42.1	84.8	9.6	61.3	416	118
Stockpile #3										
Lab #0348	04-17-07	22.8*	36.4	11.0	29.8	90.0	10.2	45.5	0	0
APAC-MISSOURI, INC. - BOONVILLE, COLUMBIA, MO										
Stockpile #1										
Lab #0181	03-21-07	4.2	50.0	13.1	32.7	90.2	0.1	53.1	383	1
Lab #0212	03-28-07	2.2	53.7	13.4	30.7	90.2	0.1	52.2	376	1
Lab #0269	04-02-07	2.8	47.5	13.7	36.0	89.4	0.2	56.1	401	2
Lab #0385	04-27-07	2.8	47.3	12.6	37.3	88.6	0.3	56.7	402	3
Lab #0587	06-05-07	2.5	48.7	13.4	35.4	89.9	0.2	55.6	400	2
APAC-MISSOURI GALLATIN, GALLATIN, MO										
Stockpile #2										
Lab #0198	03-21-07	7.0	46.0	7.7	39.3	72.1	1.4	55.4	320	16
Lab #0362	04-19-07	6.3	51.1	8.0	34.6	74.4	1.0	52.2	311	10
Lab #0548	05-21-07	7.4	61.9	7.5	23.2	81.7	0.6	43.2	282	5
Lab #0600	06-04-07	8.4	55.8	8.3	27.5	81.4	0.6	46.4	302	6
APAC-MISSOURI, INC. - LANAGAN, COLUMBIA, MO										
APAC-MISSOURI, INC. - LINN CREEK, LINN CREEK, MO										
Stockpile #2										
Lab #0056	02-14-07	4.8	52.1	12.6	30.5	76.0	9.2	51.1	311	94
Lab #0345	04-17-07	2.3	46.6	14.1	37.0	91.0	10.2	57.1	416	117
Lab #0451	05-07-07	2.1	48.0	16.0	33.9	85.8	10.7	55.5	381	119
APAC-MISSOURI, INC. - BUSIEK, COLUMBIA, MO										
Stockpile #2										
Lab #0324	04-17-07	5.3	44.6	8.2	41.9	87.7	10.7	58.0	407	124
APAC-MISSOURI, INC. - MARSHALL, MARSHALL, MO										
Stockpile #1										
Lab #0059	02-12-07	5.2	48.3	11.7	34.8	89.9	2.0	53.9	388	22
Lab #0218	03-29-07	3.4	46.3	13.8	36.5	87.2	3.2	56.4	393	36
Lab #0328	04-16-07	9.1	43.0	11.9	36.0	90.3	3.0	53.9	389	32
Lab #0461	05-11-07	12.7*	51.9	8.6	26.8	90.0	1.7	44.9	0	0
Lab #0581	06-04-07	14.7*	48.0	8.4	28.9	87.7	3.5	45.9	0	0
Lab #0671	06-20-07	10.8*	47.7	8.8	32.7	79.5	0.7	49.9	0	0
Lab #0672	06-26-07	10.2*	48.0	8.8	33.0	80.5	2.8	50.3	0	0
Stockpile #4										
Lab #0219	03-29-07	7.4	45.3	10.1	37.2	70.1	2.2	54.6	306	24
Lab #0582	06-04-07	19.4*	43.5	7.0	30.1	82.4	4.2	45.2	0	0
Lab #0670	06-20-07	10.3*	50.6	7.9	31.2	87.0	3.7	48.6	0	0
Lab #0673	06-26-07	9.1	50.7	8.9	31.3	85.4	3.7	49.3	337	36
APAC-MISSOURI, INC. - MIAMI, COLUMBIA, MO										
APAC-MISSOURI INC. - ROARK CREEK, COLUMBIA, MO										
ARKANSAS LIME COMPANY, INC., BATESVILLE, AR										

4
TABLE 1

AGRICULTURAL LIMING MATERIALS SAMPLED FROM
JANUARY 1 THROUGH JUNE 30, 2007

Distributor	Date Sampled	U.S. Sieve Fraction, %				%CCE	%Mg	Fineness Factor	Pounds/Ton	
		+8	-8+40	-40+60	-60				ENM	EMg
ASC MINERALS PROCESSING, ALLERTON, IL										
ASH GROVE AGGREGATES INC-APPLETON, BUTLER, MO										
ASH GROVES AGGREGATES-DEVER, BUTLER, MO										
Stockpile #1										
Lab #0055	02-12-07	6.0	53.8	9.6	30.6	94.4	0.6	49.8	376	6
Lab #0248	04-03-07	2.0	44.8	16.2	37.0	85.5	1.2	57.9	396	14
Lab #0653	06-07-07	4.7	52.2	10.2	32.9	85.0	4.8	52.1	354	50
ASH GROVE AGGREGATES-LACKEY, BUTLER, MO										
ASH GROVE AGGREGATES-FAIR GROVE, BUTLER, MO										
Stockpile #1										
Lab #0538	05-23-07	6.0	51.2	6.6	36.2	90.1	10.9	53.0	382	115
ASH GROVE AGGREGATES INC-BUTLER, BUTLER, MO										
Stockpile #2										
Lab #0128	03-05-07	2.2	52.4	11.4	34.0	82.1	1.0	53.9	354	11
Lab #0350	04-18-07	3.1	51.2	10.0	35.7	81.5	1.0	54.5	355	11
Lab #0526	05-23-07	4.6	52.5	9.9	33.0	83.5	0.9	52.1	348	9
ASH GROVE AGGREGATES INC-LACYGNE, BUTLER, MO										
Stockpile #4										
Lab #0036	02-06-07	2.5	49.0	12.7	35.8	85.2	0.8	55.7	379	9
Lab #0305	04-09-07	1.8	47.6	11.3	39.3	77.0	1.2	58.0	357	14
Lab #0643	06-05-07	0.8	45.8	11.1	42.3	71.6	1.3	60.4	346	16
ASH GROVE AGGREGATES INC-MARSHFIELD, BUTLER, MO										
ASH GROVE AGGREGATES INC-MONTEVALLO, BUTLER, MO										
Stockpile #1										
Lab #0101	02-27-07	5.1	50.3	10.4	34.2	89.6	0.5	53.0	380	5
Lab #0342	04-16-07	4.5	49.2	12.7	33.6	87.9	0.6	53.5	376	6
Lab #0652	06-07-07	6.2	48.5	10.5	34.8	87.6	0.5	53.2	373	5
ASH GROVE AGGREGATES INC-OSCEOLA, BUTLER, MO										
Stockpile #1										
Lab #0007	01-29-07	3.9	48.2	10.2	37.7	84.3	3.5	55.9	377	39
Lab #0315	04-13-07	4.1	48.0	10.7	37.2	87.0	2.5	55.6	387	28
ASH GROVE AGGREGATES INC-FT SCOTT, BUTLER, MO										
ASH GROVE AGGREGATES, INC-SEAGRAVES, BUTLER, MO										
Stockpile #1										
Lab #0103	02-28-07	2.7	50.0	8.9	38.4	83.9	1.1	56.2	377	12
Lab #0349	04-18-07	2.2	48.1	12.2	37.5	83.7	1.1	56.8	381	13
Lab #0527	05-23-07	1.5	49.7	11.2	37.6	83.3	1.0	56.7	378	11
ASH GROVE AGGREGATES INC.-STOCKTON, BUTLER, MO										
Stockpile #2										
Lab #0038	02-07-07	3.6	48.9	12.6	34.9	95.0	0.3	54.7	416	3
Lab #0168	03-12-07	2.9	46.0	15.2	35.9	91.9	0.4	56.5	416	5
Lab #0343	04-16-07	6.0	54.7	11.2	28.1	94.6	0.2	48.5	367	2
Lab #0651	06-07-07	4.9	51.1	14.2	29.8	93.4	0.2	51.1	382	2
ASH GROVE AGGREGATES INC-WHEATLAND, BUTLER, MO										
Stockpile #1										
Lab #0639	06-04-07	0.6	51.9	11.2	36.3	97.0	0.3	56.0	435	3
Stockpile #2										
Lab #0034	02-05-07	4.9	46.5	12.8	35.8	92.9	0.2	55.1	410	2
Lab #0314	04-12-07	11.6*	48.0	9.8	30.6	97.5	0.2	48.5	0	0
Lab #0405	05-01-07	0.4	55.4	10.7	33.5	97.8	0.5	53.8	421	5
Lab #0657	06-04-07	0.3	51.8	12.1	35.8	97.7	0.3	56.0	438	3
ASH GROVE AGGREGATES INC-BOLIVAR, BUTLER, MO										
Stockpile #1										
Lab #0084	02-21-07	0.9	49.6	11.4	38.1	95.8	0.6	57.3	439	7
Lab #0309	04-10-07	1.0	49.7	11.6	37.7	94.9	0.6	57.1	433	7
Lab #0521	05-22-07	1.6	51.7	12.2	34.5	97.3	0.5	54.7	426	5
ASH GROVE AGGREGATES - KIFER, BUTLER, MO										
Stockpile #1										
Lab #0085	02-21-07	3.9	48.5	9.9	37.7	81.1	0.6	55.8	362	7
Lab #0307	04-10-07	1.4	46.5	11.5	40.6	90.6	0.8	59.1	429	9
Lab #0524	05-22-07	3.7	52.2	10.3	33.8	81.7	0.5	53.0	347	5
ASH GROVE AGGREGATES INC-BUFFALO, BUTLER, MO										
Stockpile #2										
Lab #0102	02-27-07	1.0	45.7	11.5	41.8	93.7	11.1	60.1	451	133
Lab #0312	04-12-07	0.9	44.7	11.3	43.1	91.7	10.9	61.1	448	133
Lab #0556	05-29-07	0.5	43.3	11.9	44.3	94.1	10.8	62.3	469	134

5
TABLE 1

AGRICULTURAL LIMING MATERIALS SAMPLED FROM
JANUARY 1 THROUGH JUNE 30, 2007

Distributor	Date Sampled	U.S. Sieve Fraction, %				%CCE	Fineness		Pounds/Ton	
		+8	-8+40	-40+60	-60		%Mg	Factor	ENM	EMg
BAILEY QUARRIES INC-CHESAPEAKE Q., MT VERNON, MO										
Stockpile #1										
Lab #0371	04-18-07	0.1	33.5	13.1	53.3	89.8	10.6	69.5	500	147
Lab #0372	04-19-07	0.1	33.9	13.5	52.5	87.8	10.4	69.1	485	144
Lab #0373	04-20-07	0.1	33.8	13.3	52.8	88.2	10.6	69.2	488	147
Lab #0531	05-21-07	0.1	33.9	13.1	52.9	90.8	10.6	69.2	503	147
Stockpile #4										
Lab #0370	04-18-07	1.0	38.8	9.7	50.5	92.1	10.6	66.0	486	140
Lab #0530	05-21-07	1.3	42.0	11.5	45.2	91.7	10.9	62.6	459	136
BAILEY QUARRIES INC-JANE, JANE, MO										
Stockpile #2										
Lab #0090	02-20-07	0.5	44.7	11.0	43.8	90.9	10.3	61.6	448	127
Lab #0540	05-24-07	0.5	42.8	11.9	44.8	90.1	10.9	62.6	452	137
BAILEY QUARRIES, INC.-MADRY QUARRY, VERONA, MO										
Stockpile #2										
Lab #0380	04-27-07	4.0	52.5	8.6	34.9	84.9	4.7	53.2	361	50
BAILEY QUARRIES - SARCOXIE, REPUBLIC, MO										
Stockpile #1										
Lab #0231	03-26-07	2.9	53.4	11.5	32.2	79.4	0.1	52.5	333	1
Lab #0662	06-07-07	2.6	48.3	12.7	36.4	87.6	0.2	56.1	393	2
BAILEY QUARRIES INC-STOCKTON, STOCKTON, MO										
Stockpile #1										
Lab #0039	02-07-07	1.6	46.2	13.7	38.5	93.7	0.1	58.3	437	1
Lab #0169	03-12-07	0.7	46.9	14.7	37.7	95.7	0.1	58.2	446	1
Lab #0344	04-16-07	0.9	45.7	15.1	38.3	94.6	0.1	58.8	445	1
Lab #0650	06-07-07	1.3	47.7	14.7	36.3	94.1	0.2	57.0	429	2
BARBER & SONS AGGREGATES, LEE'S SUMMIT, MO										
Stockpile #2										
Lab #0182	03-23-07	9.4	50.3	9.0	31.3	89.4	0.5	49.3	352	5
Lab #0383	04-26-07	10.2*	47.1	8.3	34.4	84.8	1.1	51.2	0	0
Lab #0480	05-15-07	6.5	45.9	9.4	38.2	84.4	1.2	55.3	373	13
Lab #0562	05-25-07	9.1	47.6	8.5	34.8	82.6	1.1	51.8	342	11
Lab #0609	06-07-07	4.2	48.7	12.3	34.8	83.1	1.2	54.4	361	13
BARRETT MATERIALS INC, NEW HAVEN, MO										
Stockpile #1										
Lab #0019	01-29-07	2.4	47.6	9.2	40.8	82.8	9.7	58.2	386	113
Lab #0156	03-07-07	0.7	41.5	12.5	45.3	81.3	9.6	63.2	411	121
Lab #0322	04-18-07	2.9	47.8	9.9	39.4	80.3	9.2	57.3	368	105
BELLE PLANT FOODS, BELLE, MO										
Stockpile #1										
Lab #0158	03-08-07	1.7	9.1	11.8	77.4	92.5	1.4	86.8	642	24
Lab #0291	04-11-07	2.7	4.8	6.0	86.5	91.6	0.9	91.3	669	16
Lab #0515	05-15-07	2.1	9.3	11.1	77.5	91.6	1.9	86.5	634	33
BOONE QUARRIES INC - WEST, COLUMBIA, MO										
Stockpile #1										
Lab #0024	02-09-07	0.6	28.5	8.1	62.8	93.2	3.7	74.8	558	55
Lab #0149	03-12-07	0.7	29.5	10.6	59.2	92.2	3.1	72.9	538	45
Lab #0340	04-20-07	0.2	27.4	12.3	60.1	94.6	0.6	74.3	563	9
Lab #0507	05-21-07	1.4	32.8	11.1	54.7	90.8	2.6	69.6	505	36
Stockpile #2										
Lab #0150	03-12-07	0.2	35.9	14.0	49.9	96.2	1.8	67.3	518	24
Lab #0341	04-20-07	0.1	36.0	14.3	49.6	96.8	1.4	67.2	520	19
Lab #0508	05-21-07	0.1	37.8	15.0	47.1	97.1	1.5	65.6	509	20
BOONE QUARRIES INC - NORTH, COLUMBIA, MO										
Stockpile #1										
Lab #0144	03-02-07	14.8*	44.4	9.7	31.1	93.6	0.6	48.0	0	0
Lab #0337	04-20-07	15.6*	42.1	10.4	31.9	91.7	1.1	48.7	0	0
Lab #0511	05-21-07	17.2*	42.4	10.8	29.6	91.1	0.7	46.7	0	0
BOONE QUARRIES - EAST, COLUMBIA, MO										
Stockpile #1										
Lab #0023	02-09-07	9.1	32.9	11.7	46.3	95.3	2.2	61.5	469	27
Lab #0148	03-12-07	5.2	28.4	11.1	55.3	95.1	2.5	69.1	525	35
Lab #0339	04-20-07	6.4	43.0	11.8	38.8	95.0	1.5	56.6	430	17
Lab #0509	05-21-07	10.7*	37.2	10.3	41.8	90.3	7.0	57.3	0	0
Stockpile #2										
Lab #0147	03-12-07	0.5	5.9	9.8	83.8	93.4	3.6	91.2	681	66
Lab #0338	04-20-07	0.7	6.4	10.1	82.8	94.6	3.8	90.5	685	69

6
TABLE 1

AGRICULTURAL LIMING MATERIALS SAMPLED FROM
JANUARY 1 THROUGH JUNE 30, 2007

Distributor	Date Sampled	U.S. Sieve Fraction, %				%CCE	%Mg	Fineness Factor	Pounds/Ton	
		+8	-8+40	-40+60	-60				ENM	EMg
BOONE QUARRIES - EAST, COLUMBIA, MO (Continued)										
Stockpile #2										
Lab #0510	05-21-07	0.8	6.3	10.7	82.2	90.2	5.0	90.2	651	90
BURFORDVILLE MATERIALS INC, WHITEWATER, MO										
CALCIUM PRODUCTS, INC., GILMORE CITY, IA										
CAPITAL QUARRIES CO., INC.-ARCADIA, ARCADIA, MO										
Stockpile #1										
Lab #0617	06-05-07	0.5	29.6	21.0	48.9	95.5	10.9	68.9	526	150
Stockpile #2										
Lab #0618	06-05-07	6.0	65.9	7.8	20.3	95.9	11.1	41.5	318	92
CAPITAL QUARRIES CO., INC- EUGENE, JEFFERSON CITY, MO										
Stockpile #1										
Lab #0402	04-27-07	2.1	44.1	6.6	47.2	84.3	10.0	62.2	419	124
Lab #0465	05-07-07	2.5	46.6	6.7	44.2	84.2	10.2	59.9	403	122
Lab #0514	05-14-07	1.3	42.3	7.5	48.9	83.8	9.9	64.0	429	127
CAPITAL QUARRIES INC-HIGH HILL, HIGH HILL, MO										
CAPITAL QUARRIES, INC-STADIUM WEST, JEFFERSON CITY, MO										
Stockpile #2										
Lab #0251	04-04-07	2.7	41.6	8.6	47.1	90.4	10.8	62.7	453	135
Lab #0513	05-14-07	0.9	40.7	10.8	47.6	87.1	10.3	64.3	448	132
CAPITAL QUARRIES INC-ROLLA Q #4, JEFFERSON CITY, MO										
CAPITAL QUARRIES INC-CALIFORNIA Q#5, JEFFERSON CITY, MO										
Stockpile #1										
Lab #0377	04-24-07	2.3	49.6	11.6	36.5	93.2	1.6	55.9	416	18
Lab #0482	05-16-07	3.3	52.2	10.2	34.3	91.5	2.9	53.5	391	31
Lab #0563	05-29-07	4.7	54.4	9.1	31.8	87.2	3.6	50.9	355	37
CAPITAL QUARRIES INC.-HERMANN #14, JEFFERSON CITY, MO										
Stockpile #1										
Lab #0565	05-30-07	1.7	48.3	8.9	41.1	89.6	10.6	58.5	419	124
Lab #0620	06-06-07	1.9	47.6	9.2	41.3	89.4	10.4	58.7	420	122
Lab #0621	06-07-07	2.6	50.3	8.2	38.9	88.8	10.2	56.4	401	115
Lab #0669	06-19-07	1.6	48.6	9.4	40.4	89.3	10.8	58.2	416	126
Stockpile #2										
Lab #0622	06-07-07	27.7*	35.4	6.2	30.7	85.2	10.0	43.3	0	0
CAPITAL QUARRIES INC-SULLIVAN, BOURBON, MO										
Stockpile #1										
Lab #0081	02-21-07	8.3	45.1	11.7	34.9	97.8	11.0	53.2	416	117
Lab #0374	04-19-07	14.2*	44.2	11.4	30.2	96.8	11.0	48.1	0	0
CARROLL COUNTY STONE, INC., REPUBLIC, MO										
Stockpile #1										
Lab #0042	02-09-07	3.5	48.7	9.3	38.5	91.5	11.0	56.3	412	124
Lab #0495	05-17-07	2.6	43.6	10.0	43.8	87.7	10.9	60.7	426	132
CARTHAGE CRUSHED LIMESTONE, CARTHAGE, MO										
Stockpile #1										
Lab #0381	04-24-07	7.2	33.3	8.7	50.8	95.3	0.1	64.3	491	1
Lab #0572	05-31-07	2.0	34.2	13.0	50.8	95.5	0.1	67.2	513	1
CENTRAL STONE COMPANY - HUNTINGTON, HANNIBAL, MO										
Stockpile #1										
Lab #0005	01-31-07	7.3	37.5	9.4	45.8	92.8	0.4	60.8	451	5
Lab #0122	03-02-07	3.7	35.0	10.6	50.7	90.0	0.4	65.8	474	5
Lab #0271	04-05-07	3.8	34.2	10.8	51.2	93.4	0.3	66.2	495	4
Lab #0435	05-07-07	3.6	37.1	10.5	48.8	91.7	0.5	64.4	472	6
Lab #0596	06-05-07	4.1	36.6	11.3	48.0	89.5	0.4	63.9	458	5
Stockpile #2										
Lab #0004	01-31-07	1.0	40.0	12.0	47.0	89.2	0.3	64.2	458	4
Lab #0121	03-02-07	0.7	39.3	13.5	46.5	90.6	0.4	64.4	467	5
Lab #0272	04-05-07	1.6	40.8	14.0	43.6	89.1	0.1	62.2	443	1
Lab #0434	05-07-07	1.8	43.5	12.1	42.6	93.3	0.3	60.7	453	4
Lab #0595	06-05-07	2.1	45.1	12.1	40.7	93.8	0.2	59.2	444	2
Stockpile #3										
Lab #0594	06-05-07	0.4	41.6	14.2	43.8	95.2	0.3	62.7	478	4
CENTRAL STONE COMPANY-ANTONIA, HANNIBAL, MO										
CENTRAL STONE COMPANY - BETHEL, SHELBYVILLE, MO										
Stockpile #1										
Lab #0138	03-07-07	3.7	37.0	10.8	48.5	93.0	1.0	64.2	478	13
Lab #0296	04-12-07	4.3	38.4	9.7	47.6	93.1	1.2	63.0	469	15
Lab #0623	06-07-07	3.5	34.5	11.3	50.7	93.2	1.2	66.1	493	16

7
TABLE 1

AGRICULTURAL LIMING MATERIALS SAMPLED FROM
JANUARY 1 THROUGH JUNE 30, 2007

Distributor	Date Sampled	U.S. Sieve Fraction, %				%CCE	%Mg	Fineness Factor	Pounds/Ton	
		+8	-8+40	-40+60	-60				ENM	EMg
CENTRAL STONE COMPANY - BETHEL, SHELBYVILLE, MO (Continued)										
Stockpile #2										
Lab #0140	03-07-07	9.2	46.2	8.6	36.0	93.8	1.0	52.7	396	11
Lab #0297	04-12-07	9.3	44.7	9.3	36.7	93.6	1.0	53.5	400	11
Lab #0624	06-07-07	8.5	46.0	9.5	36.0	93.7	1.2	53.2	399	13
Stockpile #3										
Lab #0051	02-12-07	0.8	43.0	11.8	44.4	92.6	1.3	62.2	461	16
Lab #0139	03-07-07	0.9	45.3	12.1	41.7	93.0	1.1	60.3	449	13
Lab #0298	04-12-07	1.1	44.2	10.2	44.5	93.4	1.3	61.7	461	16
Lab #0625	06-07-07	0.7	42.1	13.2	44.0	93.3	0.9	62.4	466	11
CENTRAL STONE CO - FORT BELLE - #31, FLORISSANT, MO										
Stockpile #1										
Lab #0080	02-22-07	1.5	13.5	4.5	80.5	88.1	1.9	86.6	610	33
Lab #0180	03-21-07	0.1	0.7	4.0	95.2	85.4	1.9	97.8	668	37
Lab #0439	04-23-07	0.1	0.8	3.7	95.4	87.3	2.0	97.8	683	39
Lab #0592	06-04-07	0.1	1.6	5.6	92.7	92.5	2.8	96.5	714	54
CENTRAL STONE COMPANY - PARIS, PARIS, MO										
Stockpile #2										
Lab #0003	01-30-07	2.0	47.9	13.0	37.1	89.8	0.2	56.9	409	2
Lab #0118	03-02-07	1.5	46.9	13.0	38.6	88.4	0.2	58.1	411	2
Lab #0257	04-03-07	2.6	45.4	12.2	39.8	87.3	0.7	58.5	408	8
Lab #0431	05-07-07	1.8	46.0	12.9	39.3	90.0	0.2	58.5	421	2
CENTRAL STONE COMPANY - CURRYVILLE, CURRYVILLE, MO										
Stockpile #1										
Lab #0027	02-06-07	1.4	44.4	10.7	43.5	87.9	1.6	61.0	429	20
Lab #0124	03-05-07	2.0	47.0	11.1	39.9	91.5	1.1	58.3	427	13
Lab #0260	04-04-07	2.5	44.1	11.2	42.2	87.9	1.5	59.9	422	18
Lab #0445	05-02-07	1.6	44.8	11.0	42.6	87.0	1.7	60.4	420	21
Stockpile #2										
Lab #0123	03-05-07	3.7	44.5	9.6	42.2	85.3	1.3	59.1	403	15
Lab #0261	04-04-07	4.2	42.1	10.6	43.1	85.6	1.4	60.0	411	17
Lab #0446	05-02-07	5.1	42.6	10.7	41.6	85.6	1.4	58.7	402	16
CENTRAL STONE COMPANY - PERRY, HANNIBAL, MO										
Stockpile #1										
Lab #0436	05-07-07	6.5	39.8	9.3	44.4	88.2	2.4	59.9	423	29
Lab #0593	06-05-07	5.9	41.8	9.2	43.1	87.5	2.3	59.1	413	27
CENTRAL STONE COMPANY - EWING, HANNIBAL, MO										
Stockpile #1										
Lab #0333	04-18-07	5.3	34.7	9.8	50.2	87.8	0.8	64.8	455	10
Lab #0504	05-18-07	8.5	33.3	8.6	49.6	85.0	1.4	63.1	429	18
CENTRAL STONE COMPANY - TAYLOR, TAYLOR, MO										
Stockpile #2										
Lab #0006	01-31-07	11.0*	47.2	10.0	31.8	90.7	0.8	49.6	0	0
Lab #0273	04-05-07	11.0*	46.0	9.8	33.2	86.9	0.7	50.6	0	0
Lab #0597	06-05-07	8.1	48.4	10.8	32.7	88.2	0.6	51.3	362	6
CLEVER STONE CO, CLEVER, MO										
Stockpile #1										
Lab #0450	05-10-07	0.7	15.4	24.5	59.4	94.6	0.2	78.0	590	3
CONCO QUARRIES, SPRINGFIELD, MO										
Stockpile #1										
Lab #0412	04-30-07	0.0	8.8	14.5	76.7	96.7	0.1	87.6	678	2
Lab #0570	05-29-07	2.8	8.0	13.8	75.4	96.7	0.2	85.7	663	3
CONCO QUARRIES INC Q US 160, WILLARD, MO										
Stockpile #1										
Lab #0408	04-30-07	0.0	7.7	13.3	79.0	97.4	0.1	88.9	693	2
Lab #0535	05-23-07	0.1	9.0	14.3	76.6	96.4	0.4	87.4	674	7
Stockpile #4										
Lab #0410	04-30-07	0.1	11.2	14.2	74.5	97.3	0.2	85.8	668	3
Lab #0537	05-23-07	0.0	11.1	15.0	73.9	97.2	0.2	85.7	666	3
Stockpile #5										
Lab #0409	04-30-07	0.1	8.8	14.4	76.7	97.3	0.2	87.5	681	4
Lab #0536	05-23-07	0.0	11.2	14.6	74.2	95.2	0.5	85.8	653	9
COUNTY LINE QUARRY, WELLSVILLE, MO										
Stockpile #1										
Lab #0141	03-08-07	2.4	47.1	9.8	40.7	93.3	4.6	58.4	436	54
Lab #0256	04-02-07	4.2	45.4	10.8	39.6	94.0	3.4	57.4	432	39
Lab #0503	05-17-07	4.8	44.7	9.4	41.1	90.9	5.1	57.9	421	59

8
TABLE 1

AGRICULTURAL LIMING MATERIALS SAMPLED FROM
JANUARY 1 THROUGH JUNE 30, 2007

Distributor	Date Sampled	U.S. Sieve Fraction, %				%CCE	%Mg	Fineness Factor	Pounds/Ton	
		+8	-8+40	-40+60	-60				ENM	EMg
COUNTY LINE QUARRY, WELLSVILLE, MO (Continued)										
Stockpile #1										
Lab #0626	06-08-07	4.7	46.1	9.5	39.7	92.0	3.8	56.9	419	43
CRAWFORD LIME & MATERIAL CO, CUBA, MO										
CRIDER BROTHERS LIME CO., INC., EMINENCE, MO										
Stockpile #2										
Lab #0400	04-24-07	6.9	47.1	13.3	32.7	100.8	11.6	52.5	423	122
Lab #0575	05-29-07	1.1	50.7	14.7	33.5	103.4	12.0	55.0	455	132
DOSS & HARPER STONE CO., HOUSTON, MO										
Stockpile #1										
Lab #0488	05-14-07	1.0	43.4	13.4	42.2	84.4	10.3	61.1	412	126
Lab #0659	06-05-07	0.9	50.7	12.7	35.7	86.7	10.1	56.0	388	113
Stockpile #2										
Lab #0658	06-05-07	1.4	46.1	12.0	40.5	84.4	10.3	59.2	400	122
DOSS & HARPER STONE CO, WEST PLAINS, MO										
Stockpile #1										
Lab #0489	05-15-07	0.0	46.9	11.7	41.4	83.5	10.3	60.1	402	124
Lab #0660	06-05-07	0.2	46.9	9.1	43.8	84.1	10.0	61.0	410	122
Stockpile #2										
Lab #0490	05-15-07	0.1	32.5	8.6	58.8	80.6	9.8	72.1	465	141
Lab #0661	06-05-07	0.2	33.3	7.1	59.4	80.0	9.7	72.0	461	140
EVERETT QUARRIES #1-LATHROP, PLATTSBURG, MO										
Stockpile #2										
Lab #0046	02-06-07	0.1	48.4	12.3	39.2	86.8	0.8	58.7	407	9
Lab #0165	03-13-07	0.3	49.1	12.4	38.2	86.8	0.6	57.9	402	7
Lab #0284	04-09-07	0.2	49.5	12.2	38.1	87.4	0.8	57.8	404	9
Lab #0633	06-06-07	0.2	48.5	12.7	38.6	71.7	1.6	58.3	335	19
EVERETT QUARRIES #6-KING, PLATTSBURG, MO										
Stockpile #1										
Lab #0107	03-01-07	4.3	44.9	8.5	42.3	86.3	1.0	58.6	405	12
Lab #0220	03-26-07	4.3	47.5	11.0	37.2	82.9	1.2	55.7	369	13
Lab #0241	04-02-07	4.3	46.0	9.3	40.4	86.0	0.9	57.5	395	10
Lab #0472	05-14-07	1.8	47.7	10.3	40.2	85.7	1.0	58.3	400	12
Lab #0568	06-01-07	1.2	48.3	11.8	38.7	87.1	0.9	57.9	403	10
EVERETT QUARRIES #53-CAMERON, PLATTSBURG, MO										
Stockpile #1										
Lab #0204	03-22-07	1.8	47.9	11.1	39.2	77.5	1.7	57.8	359	20
Lab #0447	05-10-07	0.8	44.6	10.5	44.1	73.6	2.3	61.6	362	28
Lab #0634	06-06-07	0.7	47.1	12.0	40.2	78.2	1.5	59.2	370	18
EVERETT QUARRIES #54-GOWER, PLATTSBURG, MO										
Stockpile #3										
Lab #0049	02-08-07	6.4	51.5	0.0	42.1	81.2	0.8	55.0	357	9
Lab #0166	03-13-07	6.9	50.8	9.2	33.1	81.7	0.8	51.3	335	8
Lab #0354	04-17-07	0.5	51.3	10.5	37.7	81.6	0.8	56.8	371	9
Lab #0630	06-04-07	0.9	52.5	11.1	35.5	82.7	0.7	55.3	366	8
Lab #1189	09-19-09	7.1	53.6	8.0	31.3	81.0	0.8	49.5	321	8
EVERETT QUARRIES #59-STANBERRY, PLATTSBURG, MO										
Stockpile #1										
Lab #0047	02-06-07	1.4	45.1	12.5	41.0	79.9	1.7	59.8	382	20
Lab #0167	03-14-07	1.8	41.7	11.1	45.4	72.4	1.8	62.5	362	22
Lab #0403	04-30-07	2.0	47.4	10.2	40.4	73.1	1.7	58.4	341	20
Lab #0635	06-06-07	13.9*	43.7	8.6	33.8	73.3	1.8	49.9	0	0
FALL VALLEY STONE, INC., REPUBLIC, MO										
Stockpile #1										
Lab #0369	04-18-07	0.8	40.0	13.2	46.0	95.9	11.3	63.9	490	144
Lab #0529	05-21-07	0.7	39.6	11.4	48.3	98.8	11.6	65.0	514	151
FARMERS LITTER & LIME, SIKESTON, MO										
FISCHER QUARRIES LLC, HUGHESVILLE, MO										
Stockpile #1										
Lab #0061	02-12-07	4.4	49.2	13.4	33.0	90.9	3.7	53.3	388	39
Lab #0214	03-29-07	7.2	46.0	9.2	37.6	90.6	3.9	54.6	396	43
Lab #0331	04-16-07	7.6	49.0	9.2	34.2	90.0	4.1	52.0	374	43
Lab #0463	05-11-07	3.7	47.3	11.1	37.9	96.7	1.4	56.4	436	16
Lab #0586	06-04-07	5.6	49.1	10.9	34.4	95.9	2.1	53.2	408	22
Stockpile #3										
Lab #0062	02-12-07	6.0	51.3	8.2	34.5	90.2	6.2	52.2	377	65
Lab #0215	03-29-07	6.6	50.1	9.6	33.7	86.6	5.7	52.0	360	59

9
TABLE 1

AGRICULTURAL LIMING MATERIALS SAMPLED FROM
JANUARY 1 THROUGH JUNE 30, 2007

Distributor	Date Sampled	U.S. Sieve Fraction, %				%CCE	%Mg	Fineness Factor	Pounds/Ton	
		+8	-8+40	-40+60	-60				ENM	EMg
FISCHER QUARRIES LLC, HUGHESVILLE, MO (Continued)										
Stockpile #3										
Lab #0332	04-16-07	8.0	49.9	8.8	33.3	89.4	4.9	51.1	365	50
Lab #0464	05-11-07	4.5	47.6	10.8	37.1	95.3	3.6	55.5	423	40
Lab #0585	06-04-07	6.4	49.0	11.6	33.0	89.2	5.5	52.2	373	57
GABEL STONE COMPANY INC., WILLOW SPRINGS, MO										
Stockpile #1										
Lab #0174	03-14-07	1.7	49.2	16.2	32.9	90.8	10.5	54.9	399	115
Lab #0491	05-15-07	2.6	46.8	14.6	36.0	87.3	10.6	56.5	394	120
GLASGOW QUARRIES-GILLIAM, GILLIAM, MO										
GLASGOW QUARRIES - MARCELINE, MARCELINE, MO										
Stockpile #2										
Lab #0246	04-06-07	7.1	44.4	9.6	38.9	86.1	1.5	55.8	384	17
Stockpile #4										
Lab #0098	02-22-07	5.9	49.8	7.5	36.8	88.5	5.4	53.7	381	58
Lab #0222	03-27-07	4.3	49.7	8.5	37.5	88.5	5.4	55.0	390	59
Lab #0415	04-30-07	11.2*	47.2	6.7	34.9	88.3	5.2	50.7	0	0
Lab #0460	05-10-07	12.0*	49.1	6.8	32.1	88.2	5.3	48.5	0	0
HARVEY PRODUCTS INC, BLUE MOUNDS, WI										
HIGGINS - MEEKER QUARRIES LLC, DEEPWATER, MO										
Stockpile #2										
Lab #0249	04-06-07	2.8	42.3	8.2	46.7	46.4*	3.6	62.2	0	0
HILTY QUARRIES, INC. - QUARLES, CLINTON, MO										
Stockpile #1										
Lab #0041	02-08-07	1.9	56.7	10.6	30.8	77.4	1.1	51.3	318	11
Lab #0352	04-20-07	0.8	57.0	10.7	31.5	73.3	1.0	52.2	306	10
Lab #0666	06-11-07	0.9	59.9	10.4	28.8	80.0	0.5	50.0	320	5
HILTY QUARRIES, INC. - MONTROSE, CLINTON, MO										
Stockpile #3										
Lab #0008	01-30-07	0.9	41.8	12.7	44.6	92.4	0.5	62.7	463	6
Lab #0395	04-26-07	0.7	41.2	10.9	47.2	92.8	0.5	64.0	475	6
Lab #0654	06-08-07	0.8	46.1	12.9	40.2	88.9	0.4	59.5	423	5
HILTY QUARRIES, INC- SOUTH-DELL JCT, CLINTON, MO										
Stockpile #1										
Lab #0087	02-22-07	0.7	47.1	14.3	37.9	94.4	0.7	58.3	440	8
Lab #0316	04-11-07	1.1	41.7	14.8	42.4	92.9	0.3	61.7	459	4
Lab #0558	05-29-07	4.2	46.1	11.4	38.3	87.2	2.3	56.7	395	26
HILTY QUARRIES, INC - TIGHTWAD, CLINTON, MO										
Stockpile #1										
Lab #0088	02-22-07	0.7	44.1	12.0	43.2	92.5	0.4	61.4	455	5
Lab #0310	04-11-07	3.0	44.0	11.7	41.3	92.3	0.4	59.3	438	5
Lab #0452	05-09-07	0.5	41.4	12.9	45.2	93.2	0.5	63.3	472	6
Lab #0663	06-11-07	0.8	43.7	15.5	40.0	92.4	0.7	60.2	445	8
Stockpile #2										
Lab #0089	02-22-07	2.7	56.7	8.6	32.0	69.5	3.7	51.3	285	38
Lab #0664	03-11-07	2.8	50.9	9.6	36.7	76.1	4.7	55.2	336	52
Lab #0311	04-11-07	2.8	51.2	9.0	37.0	69.7	3.9	55.2	308	43
Lab #0453	05-09-07	2.7	50.7	9.7	36.9	73.1	3.8	55.4	324	42
HILTY QUARRIES, INC. - URICH, CLINTON, MO										
Stockpile #2										
Lab #0040	02-08-07	0.8	55.6	10.1	33.5	77.7	1.1	53.5	332	12
Lab #0396	04-26-07	0.9	52.7	9.3	37.1	76.9	1.1	55.9	344	12
Lab #0655	06-08-07	1.2	53.1	9.9	35.8	77.6	1.0	55.0	342	11
HILTY QUARRIES INC.-WARRENSBURG, CLINTON, MO										
Stockpile #4										
Lab #0183	03-23-07	5.5	60.7	8.9	24.9	76.9	1.1	45.4	279	10
Lab #0384	04-26-07	6.2	56.2	9.8	27.8	84.0	0.9	47.7	321	9
Lab #0481	05-15-07	7.3	59.7	10.1	22.9	77.5	1.1	43.9	272	10
Lab #0608	06-07-07	5.9	57.7	10.6	25.8	77.7	1.0	46.6	290	9
HOSTETLER QUARRY, BUFFALO, MO										
HUNT-MARTIN MATERIALS, PARKVILLE, MO										
Stockpile #1										
Lab #0211	03-12-07	2.7	52.5	9.6	35.2	81.3	1.2	54.1	352	13
HUNT-MARTIN MATERIALS - STAMPER, KANSAS CITY, MO										
Stockpile #2										
Lab #0045	02-05-07	5.2	44.2	11.3	39.3	91.8	0.7	57.1	420	8
Lab #0164	03-12-07	6.1	43.1	11.0	39.8	91.9	0.6	57.2	420	7

10
TABLE 1

AGRICULTURAL LIMING MATERIALS SAMPLED FROM
JANUARY 1 THROUGH JUNE 30, 2007

Distributor	Date Sampled	U.S. Sieve Fraction, %				%CCE	%Mg	Fineness Factor	Pounds/Ton	
		+8	-8+40	-40+60	-60				ENM	EMg
HUNT-MARTIN MATERIALS - STAMPER, KANSAS CITY, MO (Continued)										
Stockpile #2										
Lab #0355	04-17-07	0.3	31.1	16.9	51.7	91.1	0.6	69.6	507	8
Lab #0629	06-04-07	0.2	32.2	15.5	52.1	91.1	0.7	69.5	506	10
HUNT-MARTIN MATERIALS - STET, RICHMOND, MO										
HUTCHENS CONSTRUCTION-PURDY, CASSVILLE, MO										
Stockpile #2										
Lab #0063	02-16-07	1.2	47.8	13.3	37.7	87.1	0.2	57.6	402	2
HUTCHENS CONSTRUCTION-EAGLE ROCK, CASSVILLE, MO										
Stockpile #2										
Lab #0092	02-23-07	1.5	41.9	9.4	47.2	89.9	10.0	63.3	455	127
Lab #0497	05-17-07	0.7	37.7	11.8	49.8	89.3	10.5	66.3	474	139
HUTCHENS CONSTRUCTION CO-SHELL KNOB, CASSVILLE, MO										
Stockpile #1										
Lab #0109	03-02-07	3.6	40.4	8.4	47.6	91.8	11.1	62.7	461	139
Lab #0496	05-17-07	3.4	39.5	8.0	49.1	91.7	11.4	63.8	468	145
HUTCHENS CONSTRUCTION-WASHBURN, CASSVILLE, MO										
JIMMY SANDERS, INC, LEACHVILLE, AR										
JOPLIN STONE CO Q DUENWEG, JOPLIN, MO										
Stockpile #2										
Lab #0091	02-22-07	0.7	21.1	21.2	57.0	88.4	0.1	75.0	530	1
Lab #0379	04-24-07	0.1	20.2	19.9	59.8	95.5	0.1	76.8	587	2
Lab #0573	05-31-07	0.6	17.9	20.6	60.9	95.3	0.1	77.7	593	2
KELLY LIMESTONE LLC, KIRKSVILLE, MO										
Stockpile #1										
Lab #0052	02-12-07	3.7	41.8	9.3	45.2	91.4	1.5	61.2	448	18
Lab #0135	03-07-07	4.7	40.1	8.3	46.9	91.2	2.5	61.9	452	31
Lab #0299	04-12-07	9.2	44.6	8.1	38.1	91.3	2.8	54.1	395	30
Lab #0500	05-10-07	7.6	44.9	8.9	38.6	88.9	2.0	55.2	392	22
Stockpile #3										
Lab #0053	02-12-07	5.6	9.2	7.7	77.5	92.3	0.6	84.4	623	10
Lab #0136	03-07-07	3.3	8.1	5.4	83.2	82.6	0.6	88.5	585	11
Lab #0300	04-12-07	3.8	4.2	6.0	86.0	93.6	0.7	90.7	679	13
Lab #0501	05-10-07	3.2	3.2	6.2	87.4	96.0	1.0	91.9	706	18
Stockpile #4										
Lab #0054	02-12-07	0.7	7.8	6.6	84.9	90.4	1.8	90.8	657	33
Lab #0137	03-07-07	0.6	11.6	7.2	80.6	90.4	1.8	87.8	635	32
Lab #0301	04-12-07	0.8	8.9	8.4	81.9	88.4	1.6	89.2	631	29
Lab #0502	05-10-07	2.1	12.0	9.3	76.6	90.1	1.7	85.2	614	29
KEMP STONE, INC, FAIRLAND, OK										
Stockpile #1										
Lab #0449	05-09-07	1.4	44.0	12.8	41.8	77.7	0.2	60.5	376	2
KERFORD LIMESTONE CO, WEEPING WATER, NE										
Stockpile #1										
Lab #0074	02-21-07	0.0	0.1	0.1	99.8	89.2	0.7	99.9	713	14
Lab #0631	06-05-07	0.0	0.1	0.1	99.8	90.7	0.5	99.9	725	10
KNOX COUNTY STONE CO, EDINA, MO										
Stockpile #2										
Lab #0077	02-19-07	1.5	44.6	11.8	42.1	94.1	1.5	60.3	454	18
Lab #0210	03-28-07	1.1	42.3	12.4	44.2	92.5	3.1	62.2	460	39
Lab #0428	05-03-07	1.4	43.1	11.6	43.9	94.1	3.4	61.6	464	42
Lab #0559	05-29-07	0.9	40.9	10.4	47.8	94.0	3.4	64.3	483	44
L & W QUARRIES, INC - CLARKDALE #8, CENTERVILLE, IA										
Stockpile #1										
Lab #0160	03-07-07	0.4	49.1	12.0	38.5	78.9	0.3	58.0	366	3
Lab #0366	04-20-07	1.0	52.0	12.1	34.9	82.9	0.4	55.2	366	4
Lab #0551	05-22-07	1.3	52.7	15.2	30.8	83.0	0.3	53.1	353	3
L & W QUARRIES, INC - WALNUT CITY, CENTERVILLE, IA										
Stockpile #1										
Lab #0161	03-07-07	6.5	54.1	10.5	28.9	90.5	0.5	48.7	353	5
Lab #0367	04-20-07	6.5	52.0	11.0	30.5	89.6	0.4	50.1	359	4
Lab #0550	05-22-07	6.4	52.8	10.6	30.2	88.8	0.4	49.8	353	4
L & W QUARRIES INC., CENTERVILLE, IA										
Stockpile #1										
Lab #0078	02-20-07	0.6	39.7	10.1	49.6	77.3	1.7	65.6	406	22
Lab #0208	03-27-07	0.7	40.5	11.3	47.5	77.9	2.0	64.4	401	26
Lab #0429	05-04-07	0.7	42.4	11.0	45.9	82.5	2.2	63.1	416	28

11
TABLE 1

AGRICULTURAL LIMING MATERIALS SAMPLED FROM

JANUARY 1 THROUGH JUNE 30, 2007

Distributor	Date Sampled	U.S. Sieve Fraction, %				%CCE	%Mg	Fineness Factor	Pounds/Ton	
		+8	-8+40	-40+60	-60				ENM	EMg
L & W QUARRIES INC., CENTERVILLE, IA (Continued)										
Stockpile #1										
Lab #0560	05-30-07	0.8	43.1	10.9	45.2	84.3	1.1	62.5	422	14
Stockpile #2										
Lab #0209	03-27-07	9.2	43.7	9.4	37.7	91.8	0.1	54.3	399	1
Lab #0430	05-04-07	7.5	48.1	9.6	34.8	92.2	1.0	52.6	388	11
Lab #0561	05-30-07	8.5	45.2	9.7	36.6	91.2	0.3	53.7	392	3
LAFARGE QUARRY, SEDALIA, MO										
Stockpile #3										
Lab #0058	02-12-07	4.8	64.7	8.6	21.9	93.4	0.4	43.2	323	3
Lab #0267	04-06-07	4.4	64.3	8.7	22.6	92.5	0.3	43.9	325	3
Lab #0438	05-08-07	3.7	57.6	8.3	30.4	86.9	3.9	49.8	346	39
Lab #0580	06-04-07	5.8	62.3	8.5	23.4	92.6	0.5	44.1	327	4
LAFARGE CORPORATION, SEDALIA, MO										
LILE QUARRY INC., STRAFFORD, MO										
Stockpile #1										
Lab #0108	02-28-07	4.5	53.2	8.0	34.3	85.0	10.2	52.4	356	107
LIMPUS QUARRIES, INC. (BATES CITY), BATES CITY, MO										
LIMPUS QUARRIES, INC. (GARDEN CITY), HARRISONVILLE, MO										
LIMPUS QUARRIES, INC. (HARRISONVILLE), HARRISONVILLE, MO										
LIMPUS QUARRIES, INC. (HOLDEN), HARRISONVILLE, MO										
LIMPUS QUARRIES, INC.-SUGAR CREEK, HARRISONVILLE, MO										
MAGRUDER LIMESTONE CO-ASHLEY, BOWLING GREEN, MO										
Stockpile #1										
Lab #0029	02-06-07	0.3	44.8	10.7	44.2	90.3	2.0	61.8	447	25
Lab #0130	03-05-07	0.1	42.1	9.4	48.4	85.5	2.2	64.6	442	28
Lab #0264	04-04-07	0.1	46.9	12.1	40.9	97.1	1.1	59.9	465	13
Lab #0443	05-02-07	1.4	47.9	12.7	38.0	92.0	1.2	57.6	424	14
MAGRUDER LIMESTONE CO, INC.-BOWLING, BOWLING GREEN, MO										
Stockpile #1										
Lab #0131	03-05-07	1.1	45.7	11.0	42.2	93.6	1.3	60.2	451	16
Lab #0265	04-04-07	1.0	52.2	11.0	35.8	88.6	0.8	55.5	393	9
Lab #0444	05-02-07	3.5	46.2	11.0	39.3	94.5	1.2	57.5	434	14
Lab #0589	05-31-07	4.8	45.2	12.2	37.8	93.8	1.1	56.4	423	12
MAGRUDER LIMESTONE CO-FRANKFORD, BOWLING GREEN, MO										
Stockpile #1										
Lab #0125	03-05-07	0.4	38.2	12.9	48.5	97.0	1.7	65.8	511	22
Lab #0262	04-04-07	0.3	40.4	12.9	46.4	97.6	1.7	64.2	502	22
Lab #0442	05-02-07	0.7	37.6	12.0	49.7	97.3	1.8	66.3	516	24
Lab #0588	05-31-07	0.4	41.8	12.7	45.1	97.7	1.7	63.2	494	21
MAGRUDER LIMESTONE - SILEX QUARRY, TROY, MO										
Stockpile #2										
Lab #0025	02-05-07	5.2	48.5	7.8	38.5	91.0	3.4	55.3	403	38
Lab #0132	03-06-07	5.2	45.4	7.5	41.9	92.7	3.5	57.8	428	40
Lab #0292	04-11-07	4.7	46.5	7.3	41.5	96.5	3.7	57.5	444	43
Lab #0437	05-08-07	4.0	52.5	8.9	34.6	91.9	3.2	53.1	390	34
MAGRUDER LIMESTONE CO Q TROY, TROY, MO										
Stockpile #1										
Lab #0026	02-05-07	10.1*	48.2	8.6	33.1	93.2	2.2	50.3	0	0
Lab #0133	03-06-07	12.9*	54.2	8.0	24.9	81.4	1.0	43.3	0	0
Lab #0293	04-11-07	0.2	55.1	10.3	34.4	80.9	1.5	54.4	352	16
Lab #0440	04-30-07	3.1	53.1	9.6	34.2	80.2	1.4	53.2	342	15
Lab #0590	06-04-07	3.0	53.6	9.3	34.1	80.8	1.6	53.1	343	17
MANSFIELD LIME & STONE, MANSFIELD, MO										
Stockpile #2										
Lab #0170	03-13-07	0.0	43.2	10.1	46.7	81.9	9.7	63.6	416	123
MARTIN MARIETTA AGG - APPLETON, PERRYVILLE, MO										
Stockpile #1										
Lab #0192	03-21-07	1.9	42.9	14.0	41.2	95.8	1.3	60.3	462	16
Lab #0282	04-12-07	1.8	43.4	13.2	41.6	94.3	0.9	60.4	455	11
Lab #0398	04-23-07	1.0	43.6	14.0	41.4	95.0	0.9	60.7	461	11
Lab #0577	05-30-07	1.7	43.6	14.3	40.4	98.2	3.0	59.9	470	36
MARTIN MARIETTA AGGREGATE-FREDONIA, FREDONIA, KY										
MARTIN MARIETTA AGG-PERRYVILLE, PERRYVILLE, MO										
Stockpile #1										
Lab #0240	03-30-07	0.0	9.8	9.4	80.8	94.1	1.8	88.9	669	32
Lab #0616	06-04-07	0.2	11.3	10.0	78.5	94.1	1.6	87.3	657	28

12
TABLE 1

AGRICULTURAL LIMING MATERIALS SAMPLED FROM

JANUARY 1 THROUGH JUNE 30, 2007

Distributor	Date Sampled	U.S. Sieve Fraction, %				%CCE	%Mg	Fineness Factor	Pounds/Ton	
		+8	-8+40	-40+60	-60				ENM	EMg
MARTIN MARIETTA AGGREGATES-WATTERSO, DES MOINES, IA										
Stockpile #1										
Lab #0010	01-29-07	0.8	44.1	11.2	43.9	71.8	0.8	61.6	354	10
MARTIN MARIETTA AGGREGATES INC, WEEPING WATER, NE										
Stockpile #1										
Lab #0076	02-21-07	4.7	53.5	12.7	29.1	91.6	0.5	50.1	367	5
Lab #0632	06-05-07	3.3	46.7	10.7	39.3	80.8	0.7	57.4	371	8
MERTENS CONST CO-AUXVASSE, KINGDOM CITY, MO										
Stockpile #1										
Lab #0020	02-09-07	8.7	50.5	9.3	31.5	93.1	2.9	49.7	370	29
Lab #0142	03-12-07	7.8	48.7	9.2	34.3	93.3	4.4	52.0	388	46
Lab #0334	04-20-07	6.9	54.4	9.1	29.6	93.6	3.0	48.7	364	29
Lab #0505	05-21-07	7.1	50.9	9.6	32.4	93.7	3.7	50.9	381	38
Stockpile #3										
Lab #0143	03-12-07	9.5	50.5	8.5	31.5	95.3	0.3	49.2	375	3
Lab #0335	04-20-07	8.6	51.5	9.2	30.7	95.4	0.4	49.1	375	4
Lab #0506	05-21-07	8.9	51.9	8.9	30.3	95.7	0.3	48.6	372	3
MERTENS CONST CO-Q-REFORM, KINGDOM CITY, MO										
Stockpile #1										
Lab #0032	02-09-07	8.9	55.8	8.4	26.9	88.4	1.6	45.9	325	15
Lab #0254	04-06-07	5.6	50.6	9.7	34.1	85.2	3.6	52.6	358	38
Lab #0516	05-16-07	6.9	55.2	10.5	27.4	91.1	0.9	47.5	346	9
MFA INC, COLUMBIA, MO										
MID-COUNTY MATERIALS, WAYNESVILLE, MO										
MID-MISSOURI LIMESTONE INC-MBQ, KINGDOM CITY, MO										
Stockpile #1										
Lab #0031	02-09-07	6.7	48.3	11.5	33.5	95.9	0.8	52.5	403	8
Lab #0255	04-06-07	7.2	47.3	12.4	33.1	95.2	0.3	52.4	399	3
Lab #0375	04-24-07	4.7	49.4	14.6	31.3	91.0	0.3	52.4	382	3
MID-MISSOURI LIMESTONE, INC.-HOUSTO, KINGDOM CITY, MO										
Stockpile #1										
Lab #0060	02-12-07	4.4	54.7	8.1	32.8	81.0	4.5	51.3	333	46
Lab #0216	03-29-07	4.0	51.4	8.3	36.3	80.3	5.0	54.1	348	54
Lab #0329	04-16-07	4.4	50.1	7.8	37.7	77.1	4.6	54.9	339	51
Lab #0462	05-11-07	2.3	52.5	9.3	35.9	80.4	7.1	54.6	351	78
Lab #0583	06-04-07	5.0	52.4	7.8	34.8	86.4	5.0	52.6	363	53
Stockpile #3										
Lab #0217	03-29-07	4.5	51.4	7.5	36.6	74.2	3.4	54.0	320	37
Lab #0330	04-16-07	3.2	44.8	8.7	43.3	72.0	3.7	59.7	344	44
Lab #0584	06-04-07	3.8	47.0	10.8	38.4	88.1	4.4	56.6	399	50
MID-MISSOURI LIMESTONE-RIGGS, KINGDOM CITY, MO										
Stockpile #1										
Lab #0021	02-09-07	5.4	53.4	7.7	33.5	89.1	5.5	51.5	367	57
Lab #0145	03-12-07	5.2	52.2	7.3	35.3	89.2	5.3	52.7	376	56
Lab #0336	04-20-07	6.9	56.1	9.6	27.4	86.4	3.2	47.2	326	30
Lab #0512	05-21-07	4.2	50.8	9.3	35.7	88.8	4.9	54.0	383	53
Stockpile #2										
Lab #0022	02-09-07	2.4	61.0	8.3	28.3	93.8	8.8	48.5	364	85
Lab #0146	03-12-07	3.9	57.0	9.6	29.5	93.8	8.8	49.5	372	87
MIDWEST MINERALS INC - JASPER, PITTSBURG, KS										
Stockpile #1										
Lab #0413	05-01-07	0.5	39.1	16.3	44.1	97.9	0.1	63.7	499	1
Lab #0532	05-22-07	0.2	37.2	16.1	46.5	98.1	0.2	65.5	514	3
MISSISSIPPI LIME COMPANY, STE GENEVIEVE, MO										
Stockpile #1										
Lab #0238	03-29-07	0.0	0.4	0.4	99.2	98.6	0.3	99.5	785	6
Lab #0614	06-04-07	0.0	0.2	0.6	99.2	98.6	0.3	99.6	786	6
Stockpile #3										
Lab #0239	03-29-07	0.0	43.1	29.9	27.0	98.4	0.2	55.7	439	2
Lab #0615	06-04-07	0.1	43.7	31.3	24.9	98.5	0.2	54.6	430	2
MISSOURI LIME AND MATERIAL CO., INC, EUREKA, MO										
Stockpile #2										
Lab #0082	02-22-07	0.0	0.6	3.7	95.7	97.8	5.7	98.1	767	112
Lab #0520	05-17-07	0.1	0.7	3.8	95.4	100.7	7.8	97.9	788	153
MK MINERALS INC., MANHATTAN, KS										
Stockpile #1										
Lab #0044	02-05-07	0.0	0.2	2.3	97.5	89.1	0.7	98.9	705	14

13
TABLE 1

AGRICULTURAL LIMING MATERIALS SAMPLED FROM

JANUARY 1 THROUGH JUNE 30, 2007

Distributor	Date Sampled	U.S. Sieve Fraction, %				%CCE	%Mg	Fineness Factor	Pounds/Ton	
		+8	-8+40	-40+60	-60				ENM	EMg
MK MINERALS INC., MANHATTAN, KS (Continued)										
Stockpile #1										
Lab #0117	03-09-07	0.1	0.5	1.9	97.5	87.1	0.7	98.8	688	14
Lab #0289	04-13-07	3.4	1.7	3.6	91.3	89.7	0.6	93.9	674	11
Lab #0545	05-25-07	0.1	0.8	2.6	96.5	87.9	0.6	98.3	691	12
MLH, GAINESVILLE, MO										
MO VALLEY GRAIN & PELLETIZING, MISSOURI VALLEY, IA										
MORRIS ROCK, DEERFIELD, MO										
Stockpile #1										
Lab #0351	04-19-07	3.1	59.6	10.0	27.3	93.5	0.9	48.2	361	9
MOUNTAIN GROVE QUARRY, MOUNTAIN GROVE, MO										
Stockpile #1										
Lab #0171	03-13-07	0.4	50.8	8.2	40.6	88.4	10.4	58.2	412	121
Lab #0493	05-16-07	0.2	48.9	9.5	41.4	91.2	11.1	59.3	433	132
MUEKNS BROTHERS QUARRIES, INC-WEST, LOOSE CREEK, MO										
Stockpile #2										
Lab #0030	02-08-07	1.8	38.6	11.8	47.8	88.8	10.6	64.5	458	137
Lab #0252	04-04-07	2.3	44.3	10.4	43.0	89.6	10.7	60.3	432	129
Lab #0466	05-07-07	2.0	44.5	9.7	43.8	89.2	11.2	60.7	433	136
MUEKNS BROS. QUARRY, LOOSE CREEK, MO										
Stockpile #2										
Lab #0234	03-28-07	0.3	39.4	9.0	51.3	87.1	10.5	66.6	464	140
Lab #0427	05-03-07	0.5	40.0	9.7	49.8	88.0	10.8	65.6	462	142
KEITH MURRAY, PLATO, MO										
Stockpile #1										
Lab #0172	03-13-07	0.9	6.5	2.8	89.8	99.7	0.2	93.1	743	4
Lab #0494	05-16-07	0.5	3.2	1.9	94.4	99.1	0.4	96.3	764	8
NELSON BROS. QUARRIES, JASPER, MO										
Stockpile #1										
Lab #0414	05-01-07	0.2	38.3	17.4	44.1	96.7	0.3	64.1	496	4
Lab #0533	05-22-07	0.3	39.5	17.8	42.4	96.8	0.3	63.0	488	4
NEMO SAND & GRAVEL, QUARRY, PITTSBURG, MO										
Stockpile #1										
Lab #0033	02-05-07	1.1	52.2	6.6	40.1	82.1	9.8	57.1	375	112
Lab #0313	04-12-07	0.7	43.6	9.0	46.7	84.8	10.1	63.0	427	127
Lab #0404	05-01-07	0.0	37.8	9.2	53.0	85.1	10.1	68.0	463	137
Lab #0656	06-04-07	0.3	40.8	8.8	50.1	85.0	10.0	65.6	446	131
NORRIS AGGREGATE PROD. CO.-BARNARD, OTTUMWA, IA										
Stockpile #1										
Lab #0013	02-01-07	1.2	53.3	11.6	33.9	85.1	1.0	54.2	369	11
NORRIS AGGREGATES PROD. CO.-BETHANY, OTTUMWA, IA										
Stockpile #3										
Lab #0106	02-28-07	1.4	41.4	10.3	46.9	83.4	1.3	63.4	423	16
Lab #0229	03-29-07	5.3	46.1	10.0	38.6	82.8	1.3	56.1	372	15
Lab #0391	04-27-07	6.5	48.2	9.3	36.0	82.3	1.3	53.6	353	14
Lab #0479	05-17-07	2.2	46.7	10.6	40.5	85.2	1.4	58.5	399	16
Lab #0566	05-30-07	1.3	47.5	11.0	40.2	84.2	1.3	58.7	395	15
NORRIS AGGREGATE PROD. CO. - BREIT, OTTUMWA, IA										
Stockpile #1										
Lab #0014	02-02-07	8.6	56.0	7.8	27.6	82.2	1.2	46.3	304	11
Lab #0162	03-12-07	4.8	53.1	9.5	32.6	79.9	1.6	51.6	330	17
Lab #0287	04-13-07	9.8	46.3	7.5	36.4	73.6	1.6	52.5	309	17
Lab #0543	05-25-07	8.4	46.3	7.5	37.8	75.3	1.7	53.9	325	18
NORRIS AGGREGATE PRDCTS-BLUE MOUND, OTTUMWA, IA										
Stockpile #1										
Lab #0221	03-26-07	0.5	46.7	13.1	39.7	89.1	1.2	59.2	422	14
Lab #0242	04-02-07	0.6	51.4	11.2	36.8	89.5	1.1	56.4	404	12
Lab #0359	04-17-07	0.6	48.5	13.3	37.6	89.7	1.1	57.7	414	13
Lab #0473	05-14-07	0.4	49.1	13.1	37.4	90.5	1.1	57.5	417	13
Lab #0569	06-01-07	0.4	46.6	12.1	40.9	89.8	1.2	59.8	430	14
NORRIS AGGREGATE PROD. CO.-GALLATIN, OTTUMWA, IA										
Stockpile #1										
Lab #0199	03-21-07	6.2	51.5	8.4	33.9	81.5	1.4	51.8	338	15
Lab #0363	04-19-07	5.2	49.6	9.6	35.6	78.1	1.4	53.8	336	15
Lab #0549	05-21-07	6.3	50.4	8.6	34.7	83.5	1.1	52.5	350	12
Lab #0599	06-04-07	7.3	52.6	9.1	31.0	82.0	1.2	49.6	325	12
NORRIS AGGREGATE PROD. CO.- GOODEN, OTTUMWA, IA										

14
TABLE 1

AGRICULTURAL LIMING MATERIALS SAMPLED FROM
JANUARY 1 THROUGH JUNE 30, 2007

Distributor	Date Sampled	U.S. Sieve Fraction, %				%CCE	%Mg	Fineness Factor	Pounds/Ton	
		+8	-8+40	-40+60	-60				ENM	EMg
NORRIS AGGREGATE PRODUCTS CO - EAST, HUNTSVILLE, MO										
Stockpile #1										
Lab #0099	02-23-07	1.5	45.6	12.8	40.1	94.5	2.2	59.2	447	26
Lab #0175	03-12-07	2.7	45.4	12.9	39.0	92.4	3.0	58.1	429	35
Lab #0360	04-16-07	4.6	47.5	13.8	34.1	91.1	0.6	54.3	395	7
Lab #0455	05-08-07	4.3	45.1	12.1	38.5	91.4	2.1	57.0	417	24
Lab #0605	06-06-07	0.2	43.4	13.9	42.5	90.7	1.9	61.7	448	23
Lab #1194	09-19-09	3.0	44.5	15.4	37.1	91.5	0.4	57.5	421	5
NORRIS AGGREGATE PRODUCTS CO - WEST, HUNTSVILLE, MO										
NORRIS AGGREGATE PROD. CO.-JEFFRIES, OTTUMWA, IA										
NORRIS AGGREGATE PROD. CO.-MAITLAND, OTTUMWA, IA										
Stockpile #1										
Lab #0012	02-01-07	5.2	45.8	12.3	36.7	87.3	0.6	55.5	388	7
Lab #0116	03-08-07	4.0	50.2	9.9	35.9	87.1	0.7	54.4	379	8
Lab #0286	04-13-07	4.1	50.8	9.2	35.9	86.4	0.4	54.1	374	4
Lab #0542	05-22-07	11.6*	47.6	8.9	31.9	87.7	0.8	49.1	0	0
NORRIS AGGREGATE PROD. CO.- MERCER, OTTUMWA, IA										
NORRIS AGGREGATE PROD. CO. -ROUTE C, SAVANNAH, MO										
NORRIS AGGREGATE PROD CO-PRINCETON, OTTUMWA, IA										
Stockpile #1										
Lab #0674	06-26-07	7.7	50.5	8.5	33.3	80.9	1.2	51.0	330	12
NORRIS AGGREGATE PROD. CO.- TRENTON, OTTUMWA, IA										
Stockpile #1										
Lab #0104	02-26-07	1.4	46.4	10.4	41.8	87.5	1.0	59.6	417	12
Lab #0227	03-28-07	2.8	47.1	10.5	39.6	80.2	0.9	57.7	370	10
Lab #0358	04-17-07	1.8	47.0	12.0	39.2	84.2	1.0	58.2	392	12
Lab #0418	05-03-07	1.7	47.9	11.4	39.0	89.8	0.8	57.8	415	9
NORRIS AGGREGATE PRODUCT CO-AMAZONI, OTTUMWA, IA										
NORRIS AGGREGATE PRODUCTS-NEW POINT, OTTUMWA, IA										
PELLETIZING COMPANY INC, GORDONSVILLE, TN										
PHENIX ROCK, ASH GROVE, MO										
Stockpile #1										
Lab #0368	04-18-07	2.5	52.1	14.4	31.0	94.1	0.1	52.7	396	1
Lab #0528	05-21-07	15.5*	44.7	12.1	27.7	97.8	0.1	46.1	0	0
PLATTE RIVER PELLETIZING CO, WEEPING WATER, NE										
Stockpile #1										
Lab #0075	02-21-07	0.0	2.1	3.6	94.3	86.1	0.6	97.0	668	12
PRESTAGE QUARRIES INC, TIPTON, MO										
Stockpile #1										
Lab #0100	02-27-07	0.4	44.8	10.7	44.1	80.5	6.3	61.7	397	78
Lab #0270	04-02-07	0.0	46.2	11.6	42.2	80.7	6.1	60.7	392	74
Lab #0406	04-30-07	0.0	48.5	9.4	42.1	78.6	5.7	59.9	376	68
Lab #0610	06-08-07	0.2	34.9	10.0	54.9	68.0	4.4	69.6	379	61
ROCK QUARRIES, LLC, MOUNTAIN GROVE, MO										
ROCK QUARRIES, LLC, MOUNTAIN GROVE, MO										
Stockpile #1										
Lab #0173	03-14-07	7.7	45.9	10.7	35.7	88.9	10.3	53.6	381	110
Lab #0492	05-15-07	4.4	45.3	11.5	38.8	88.5	10.9	57.0	404	124
GRISHAM GRADING & EXCAVATING, INC, PLATT CITY, MO										
S & A CONSTRUCTION LTD, ALLENDALE, MO										
Stockpile #1										
Lab #0009	01-29-07	1.9	48.1	8.4	41.6	74.3	1.1	58.7	349	13
Lab #0111	03-06-07	0.4	51.7	10.9	37.0	71.3	1.1	56.5	322	12
Lab #0268	04-02-07	0.2	50.9	9.9	39.0	72.4	1.1	57.7	334	13
Lab #0448	05-11-07	0.3	46.1	9.7	43.9	72.7	1.3	61.2	356	16
SCHILDBERG CONST. CO.-BEDFORD Q., GREENFIELD, IA										
Stockpile #1										
Lab #0073	02-21-07	1.9	38.8	10.1	49.2	82.7	0.8	65.0	430	10
Lab #0206	03-23-07	2.2	39.8	10.2	47.8	83.1	0.7	63.9	425	9
Lab #0382	04-24-07	1.9	41.4	9.5	47.2	83.0	0.7	63.3	420	9
Lab #0627	05-31-07	2.0	41.5	10.5	46.0	82.4	0.8	62.7	413	10
SCHILDBERG CONST. CO.-GRAHAM MO Q, GREENFIELD, IA										
Stockpile #1										
Lab #0113	03-08-07	2.6	45.2	12.8	39.4	87.5	0.8	58.4	409	9
Lab #0285	04-13-07	4.8	44.3	11.5	39.4	85.2	0.7	57.4	391	8
Lab #0541	05-22-07	3.7	45.0	11.8	39.5	84.0	0.7	57.8	389	8

15
TABLE 1

AGRICULTURAL LIMING MATERIALS SAMPLED FROM

JANUARY 1 THROUGH JUNE 30, 2007

Distributor	Date Sampled	U.S. Sieve Fraction, %				%CCE	%Mg	Fineness Factor	Pounds/Ton	
		+8	-8+40	-40+60	-60				ENM	EMg
SCHILDBERG CONST. CO.-SHAMBAUGH Q, GREENFIELD, IA										
Stockpile #1										
Lab #0011	01-30-07	5.9	45.9	14.3	33.9	83.8	1.1	54.0	362	12
Lab #0114	03-07-07	2.9	49.4	11.2	36.5	83.3	1.2	55.6	370	13
Lab #0353	04-15-07	2.2	49.5	12.9	35.4	83.2	1.1	55.5	370	12
Lab #0628	05-31-07	1.6	48.2	11.7	38.5	82.9	1.0	57.6	382	12
SCHILDBERG CONST. CO.-WATTERSON, GREENFIELD, MO										
SHAWNEE STONE - CYPRESS PLANT, CYPRESS, IL										
Stockpile #1										
Lab #0477	05-16-07	23.8*	45.1	8.1	23.0	91.8	1.3	39.1	0	0
SHAWNEE STONE - JONESBORO PLANT, ANNA, IL										
Stockpile #1										
Lab #0475	05-16-07	5.3	40.4	11.8	42.5	98.6	0.5	59.7	471	6
Stockpile #2										
Lab #0636	06-06-07	6.1	47.6	11.0	35.3	98.5	0.4	53.8	424	4
Stockpile #3										
Lab #0637	06-06-07	6.4	50.9	10.6	32.1	98.6	0.4	51.2	404	4
SHELBY CO. STONE, SHELBY, MO										
Stockpile #1										
Lab #0050	02-12-07	6.0	43.8	9.4	40.8	86.9	1.5	57.4	399	17
Lab #0134	03-07-07	5.3	41.4	8.9	44.4	87.7	1.4	60.1	422	17
Lab #0294	04-12-07	5.1	41.9	9.1	43.9	87.3	1.4	59.8	418	17
Lab #0499	05-10-07	5.4	42.3	10.1	42.2	87.1	1.5	58.8	410	18
Stockpile #2										
Lab #0295	04-12-07	5.2	48.1	11.3	35.4	92.3	1.4	54.2	400	15
Lab #0498	05-10-07	4.9	41.9	12.3	40.9	91.9	1.5	58.8	432	18
SIEGEL GRAVEL & EXCAVATING, VERSAILLES, MO										
SCAGGS ROCK-N-LIME, INC., PATTERSON, MO										
SOUTH CENTRAL COOP, CAINSVILLE, MO										
Stockpile #1										
Lab #0225	03-28-07	0.0	0.4	1.8	97.8	95.4	0.5	99.0	755	10
Lab #0454	05-07-07	0.0	1.0	0.9	98.1	94.4	0.3	98.9	747	6
SMASAL AGGREGATE, LINCOLN, MO										
Stockpile #1										
Lab #0083	02-20-07	1.0	50.3	13.0	35.7	95.7	0.2	56.1	429	2
Lab #0317	04-11-07	1.6	50.7	12.3	35.4	95.6	0.1	55.5	424	1
Lab #0665	06-11-07	3.7	56.0	9.5	30.8	96.8	0.1	50.5	391	1
SPRINGFIELD UNDERGROUND, INC., SPRINGFIELD, MO										
Stockpile #2										
Lab #0411	04-30-07	3.4	18.0	12.4	66.2	96.7	0.2	78.1	604	3
Lab #0571	05-29-07	3.2	13.3	9.8	73.7	97.9	0.1	82.9	649	2
S-S-S INC, LOUISIANA, MO										
Stockpile #1										
Lab #0028	02-06-07	5.6	47.2	10.0	37.2	96.2	0.2	55.0	423	2
Lab #0129	03-05-07	4.9	46.5	10.2	38.4	95.0	0.2	56.1	427	2
Lab #0263	04-04-07	5.6	47.9	10.0	36.5	94.8	0.2	54.5	413	2
Lab #0441	05-02-07	7.6	47.3	10.6	34.5	93.9	0.2	52.7	396	2
SULFER CAL, MORRISON, TN										
Stockpile #1										
Lab #0001	01-09-07	2.0	4.4	2.6	91.0	81.8	2.0	93.7	613	37
Lab #0015	01-30-07	1.1	3.7	2.8	92.4	86.1	2.0	95.0	654	38
Lab #0189	03-20-07	4.5	8.2	4.4	82.9	83.2	2.2	87.6	583	39
Lab #0281	04-10-07	0.3	3.1	13.2	83.4	96.8	2.3	92.1	713	42
Lab #0478	05-16-07	0.4	2.4	3.5	93.7	86.1	2.0	96.4	664	39
SWAN ROCK AND SAND PRO, CINCINATI, IA										
T & M STONE LLC, FAIR PLAY, MO										
Stockpile #2										
Lab #0086	02-21-07	0.3	32.0	19.9	47.8	88.5	0.2	67.7	480	3
Lab #0308	04-10-07	0.6	36.8	15.5	47.1	87.8	0.2	65.6	461	3
Lab #0525	05-22-07	0.4	38.1	15.0	46.5	84.8	0.1	65.0	441	1
TABLE ROCK ASPHALT CONST CO INC, BRANSON, MO										
Stockpile #1										
Lab #0325	04-17-07	1.3	50.6	9.2	38.9	82.3	9.6	57.1	376	110
Stockpile #2										
Lab #0326	04-17-07	0.0	1.2	4.2	94.6	79.5	1.1	97.4	620	21
TABLE ROCK ASPHALT CONST CO INC-KIM, BRANSON, MO										
TAYLOR QUARRIES, LOCKWOOD, MO										

16
TABLE 1

AGRICULTURAL LIMING MATERIALS SAMPLED FROM

JANUARY 1 THROUGH JUNE 30, 2007

Distributor	Date Sampled	U.S. Sieve Fraction, %				%CCE	%Mg	Fineness Factor	Pounds/Ton	
		+8	-8+40	-40+60	-60				ENM	EMg
TOWER ROCK STONE CO, SCOTT CITY, MO										
Stockpile #2										
Lab #0016	01-30-07	4.4	39.6	16.2	39.8	98.4	0.4	59.4	468	5
Lab #0187	03-20-07	1.8	45.0	14.3	38.9	95.6	2.5	58.7	449	29
Lab #0279	04-10-07	2.2	43.1	12.9	41.8	96.6	1.5	60.3	466	18
Lab #0555	05-23-07	3.8	38.4	15.7	42.1	97.4	0.6	61.1	476	7
Stockpile #3										
Lab #0017	01-30-07	2.3	36.5	16.4	44.8	98.2	0.4	63.8	501	5
Lab #0188	03-20-07	0.6	47.4	11.3	40.7	95.0	1.7	59.3	451	20
Lab #0280	04-10-07	1.9	41.5	8.8	47.8	96.3	1.4	63.5	489	18
TOWER ROCK STONE CO, STE GENEVIEVE, MO										
Stockpile #1										
Lab #0235	03-29-07	0.6	42.4	12.7	44.3	94.5	2.6	62.5	473	33
Lab #0612	06-04-07	0.5	39.5	17.5	42.5	97.7	1.1	62.9	491	14
Stockpile #2										
Lab #0236	03-29-07	0.5	33.0	10.2	56.3	95.3	7.1	70.7	539	100
Lab #0611	06-04-07	0.5	37.0	11.5	51.0	95.5	7.5	67.2	513	101
Stockpile #3										
Lab #0237	03-29-07	2.3	40.4	16.4	40.9	97.9	0.4	60.8	476	5
Lab #0613	06-04-07	2.3	43.6	17.0	37.1	97.1	0.3	58.2	452	3
TRAGER LIMESTONE, CHILLICOTHE, MO										
Stockpile #1										
Lab #0105	02-27-07	0.1	49.9	10.0	40.0	77.1	0.9	58.5	361	11
Lab #0197	03-21-07	0.4	47.9	10.8	40.9	77.5	1.0	59.4	368	12
Lab #0361	04-19-07	0.2	50.2	11.7	37.9	77.1	0.8	57.5	354	9
Lab #0547	05-21-07	0.0	49.4	12.0	38.6	80.4	0.7	58.2	374	8
Lab #0601	06-04-07	0.3	49.0	10.7	40.0	78.6	0.9	58.7	369	11
TRAGER LIMESTONE LLC, HAMILTON, MO										
TWIN LAKES QUARRIES INC, MOUNTAIN HOME, AR										
UEHLIN QUARRY, AMAZONIA, MO										
Stockpile #1										
Lab #0043	02-05-07	0.2	40.1	13.9	45.8	71.9	2.4	64.2	369	31
Lab #0163	03-12-07	1.6	44.8	10.4	43.2	73.3	2.2	60.6	356	27
Lab #0288	04-13-07	0.4	46.4	11.6	41.6	74.8	2.1	60.2	360	25
Lab #0544	05-25-07	0.2	45.4	10.6	43.8	75.1	2.3	61.5	370	28
UNITED SUPPLIERS, ELDORA, IA										
VAN BUREN STONE c/o GIBBS TRUCKING, POPLAR BLUFF, MO										
Stockpile #1										
Lab #0067	02-21-07	8.4	42.7	13.2	35.7	79.6	10.0	54.3	346	109
Lab #0399	04-24-07	8.8	48.1	11.9	31.2	87.6	10.1	50.4	353	102
Lab #0576	05-29-07	7.6	41.3	15.5	35.6	80.1	9.5	55.2	354	105
VULCAN MATERIALS, JONESBORO, IL										
Stockpile #1										
Lab #0018	01-30-07	4.6	39.5	11.8	44.1	98.6	0.2	61.1	482	2
Lab #0190	03-21-07	4.3	41.9	11.6	42.2	98.5	0.4	59.6	470	5
Lab #0397	04-23-07	4.5	41.8	11.6	42.1	98.3	0.3	59.5	468	4
WADE AG PRODUCTS-MAIN OFC, LACYGNE, KS										
Stockpile #2										
Lab #0037	02-06-07	10.2*	45.0	9.4	35.4	86.4	1.1	52.3	0	0
Lab #0306	04-09-07	6.1	49.2	9.4	35.3	91.1	0.5	53.2	388	5
Lab #0644	06-05-07	4.6	48.6	9.8	37.0	91.4	0.4	55.0	402	4
TRAGER LIMESTONE, GALLATIN, MO										
Stockpile #1										
Lab #0223	03-26-07	0.0	47.2	11.9	40.9	74.4	1.3	59.8	356	16
Lab #0546	05-21-07	0.2	48.2	10.4	41.2	81.2	0.7	59.5	386	8
Lab #0602	06-04-07	0.5	38.3	11.4	49.8	82.4	0.9	66.2	436	12
WADE AG PRODUCTS Q DREXEL, LACYGNE, KS										
Stockpile #1										
Lab #0035	02-06-07	7.7	56.9	8.9	26.5	84.9	1.4	46.1	313	13
Lab #0304	04-09-07	5.4	51.5	10.0	33.1	81.9	1.4	52.0	341	15
Lab #0642	06-05-07	9.0	56.1	8.6	26.3	83.6	1.1	45.5	304	10
WASHINGTON COUNTY AGGREGATES, INC., POTOSI, MO										
Stockpile #1										
Lab #0154	03-06-07	3.5	34.7	14.9	46.9	100.0	12.0	64.5	516	155
Lab #0619	06-05-07	0.2	36.5	16.5	46.8	99.8	11.5	65.8	526	151
FRED WEBER INC.-AUBURN QUARRY, ELSBERRY, MO										

17
TABLE 1

AGRICULTURAL LIMING MATERIALS SAMPLED FROM
JANUARY 1 THROUGH JUNE 30, 2007

Distributor	Date Sampled	U.S. Sieve Fraction, %				%CCE	%Mg	Fineness Factor	Pounds/Ton	
		+8	-8+40	-40+60	-60				ENM	EMg
FRED WEBER INC.-BLUFF CITY MINERALS, ALTON, IL										
Stockpile #1										
Lab #0079	02-22-07	0.6	11.6	8.6	79.2	89.3	1.4	87.3	623	24
Lab #0591	06-04-07	0.5	11.2	7.8	80.5	91.7	1.2	88.0	645	21
FRED WEBER, INC - FESTUS STONE, FESTUS, MO										
Stockpile #1										
Lab #0151	03-06-07	0.3	10.6	14.4	74.7	94.5	2.7	86.0	650	46
Lab #0519	05-17-07	0.1	1.0	3.2	95.7	91.4	1.7	97.9	716	33
FRED WEBER, INC - FOLEY QUARRY, FOLEY, MO										
FRED WEBER, INC.-NEW MELLE STONE, NEW MELLE, MO										
Stockpile #1										
Lab #0253	04-05-07	7.2	18.1	11.5	63.2	96.0	2.8	74.6	573	42
Lab #0321	04-18-07	7.9	19.4	11.7	61.0	92.5	2.5	72.9	539	36
FRED WEBER INC-NORTH QUARRY, MARYLAND HEIGHTS, MO										
Stockpile #1										
Lab #0066	02-14-07	0.4	14.2	16.9	68.5	93.2	3.2	82.2	613	53
Lab #0517	05-17-07	0.1	14.3	17.5	68.1	93.4	2.3	82.2	614	38
FRED WEBER, INC. - SOUTH STONE, ST. LOUIS, MO										
Stockpile #2										
Lab #0518	05-17-07	0.1	2.3	4.5	93.1	88.0	1.1	96.4	678	21
WILKERSON BROS QUARRY, PARIS, MO										
Stockpile #1										
Lab #0002	01-30-07	2.9	49.0	12.1	36.0	90.7	1.7	55.5	403	19
Lab #0119	03-02-07	3.8	49.8	10.7	35.7	94.2	3.2	54.6	411	35
Lab #0258	04-03-07	4.0	46.9	12.6	36.5	94.7	3.9	55.8	423	44
Lab #0432	05-07-07	2.4	42.6	13.5	41.5	93.4	3.8	60.3	450	46
Stockpile #2										
Lab #0120	03-02-07	6.8	52.1	8.5	32.6	92.9	4.1	50.7	377	42
Lab #0259	04-03-07	4.2	48.4	12.4	35.0	91.9	2.7	54.5	401	29
Lab #0433	05-07-07	2.8	45.9	12.0	39.3	92.8	3.2	58.0	430	37
WILLARD ASPHALT - #18 SLEEPER, LEBANON, MO										
Stockpile #1										
Lab #0394	04-25-07	0.5	0.4	1.0	98.1	81.6	9.7	98.8	645	192
Lab #0649	06-06-07	4.4	0.6	1.0	94.0	82.8	9.6	94.8	628	182
WILLARD ASPHALT PAVING,- #19, LEBANON, MO										
Stockpile #1										
Lab #0233	03-27-07	2.5	1.1	0.9	95.5	88.2	10.8	96.3	680	208
Lab #0470	05-09-07	0.0	0.4	0.7	98.9	87.0	10.6	99.4	692	211
WILLARD QUARRY-SLEEPER, LEBANON, MO										
Stockpile #1										
Lab #0647	06-06-07	0.6	3.4	22.7	73.3	84.6	10.1	87.8	594	177
Stockpile #2										
Lab #0393	04-25-07	3.8	44.2	13.6	38.4	84.7	9.9	57.6	390	114
Lab #0648	06-06-07	5.1	45.1	12.0	37.8	82.3	9.9	56.3	371	111
WILLARD QUARRIES- ST ROBERT, ST. ROBERT, MO										
Stockpile #1										
Lab #0232	03-27-07	4.9	47.3	15.4	32.4	94.1	11.4	53.5	402	122
Lab #0471	05-09-07	5.0	41.0	16.6	37.4	96.1	11.8	57.6	443	136
WILLIAMSVILLE STONE CO, POPLAR BLUFF, MO										
Stockpile #2										
Lab #0064	02-13-07	0.9	36.7	16.6	45.8	96.6	11.4	64.9	502	148
Lab #0184	03-19-07	0.7	35.0	13.9	50.4	97.5	11.6	67.5	526	157
Lab #0425	05-02-07	0.8	33.0	14.8	51.4	97.9	11.7	68.5	537	160
Lab #0579	06-04-07	0.2	32.2	16.5	51.1	98.8	11.8	69.1	546	163

18
TABLE 2

AGRICULTURAL LIMING MATERIALS SAMPLED FROM

JANUARY 1 THROUGH JUNE 30, 2007

Dealer and Producer	Date Sampled	U.S. Sieve Fraction, %				%CCE	%Mg	Fineness Factor	Pounds/Ton	
		+8	-8+40	-40+60	-60				ENM	EMg
AG CHOICE, ROCK PORT, MO										
MK MINERALS INC., MANHATTAN, KS										
Lab #0205	03-19-07	0.1	0.5	2.4	97.0	88.9	0.7	98.6	701	14
AGRI ENTERPRISES, LICKING, MO										
SPRINGFIELD UNDERGROUND, INC., SPRINGFIELD, MO										
Lab #0487	05-14-07	2.6	15.1	10.9	71.4	97.4	0.3	81.7	637	5
AGRI SERVICES OF LEBANON, LEBANON, MO										
CONCO QUARRIES INC Q US 160, WILLARD, MO										
Lab #0230	03-28-07	3.6	23.2	14.5	58.7	65.6	0.4	73.2	384	6
Lab #0484	05-14-07	1.2	12.4	14.5	71.9	97.4	0.2	83.7	652	3
Lab #0646	06-06-07	0.1	9.2	13.9	76.8	96.5	0.7	87.4	675	12
BACKES & TOLKE, NEW HAVEN, MO										
CONCO QUARRIES INC, SPRINGFIELD, MO										
Lab #0290	04-10-07	0.0	12.1	15.8	72.1	96.0	0.2	84.6	650	3
BARTLETT & CO, HIGGINSVILLE, MO										
CONCO QUARRIES INC, SPRINGFIELD, MO										
Lab #0274	04-09-07	0.1	8.9	15.5	75.5	97.0	0.1	87.0	675	2
BOLIVAR FARMERS EXCHANGE, BOLIVAR, MO										
CONCO QUARRIES INC Q US 160, WILLARD, MO										
Lab #0523	05-22-07	0.1	10.6	14.6	74.7	97.6	0.1	86.1	672	2
CHULA FARMERS COOP, CHULA, MO										
UNITED SUPPLIERS, ELDORA, IA										
Lab #0357	04-17-07	0.1	0.2	1.1	98.6	86.0	0.7	99.3	683	14
DELTA GROWERS ASSN-EAST PRAIRIE, CHARLESTON, MO										
VULCAN MATERIALS, JONESBORO, IL										
Lab #0278	04-11-07	6.5	39.8	10.5	43.2	98.8	0.5	59.5	470	6
RUBLE ROCK & LIME INC, PATTERSON, MO										
Lab #0277	04-11-07	6.1	15.0	24.0	54.9	98.1	11.7	73.1	573	171
DISSEN ENTERPRISES, NEW HAVEN, MO										
FRED WEBER INC-NORTH QUARRY, MARYLAND HEIGHTS, MO										
Lab #0667	06-19-07	1.9	14.2	18.2	65.7	92.8	1.6	80.2	595	26
FALLEN SPRINGS QUARRY, DUPO, IL										
Lab #0668	06-19-07	39.2*	41.7	2.6	16.5	93.1	2.1	28.5	0	0
FARMERS PRODUCERS EXCHANGE-CONWAY, LEBANON, MO										
CONCO QUARRIES INC Q US 160, WILLARD, MO										
Lab #0557	05-29-07	0.1	7.7	12.9	79.3	97.4	0.4	89.0	693	7
FOWLER ELEVATOR INC, NEWTOWN, MO										
KELLY LIMESTONE LLC, KIRKSVILLE, MO										
Lab #0179	03-13-07	6.6	21.8	5.2	66.4	89.0	1.3	75.0	534	19
Lab #0419	05-02-07	0.6	8.3	7.2	83.9	90.0	1.9	90.3	650	34
FOWLER ELEVATOR, UNIONVILLE, MO										
KELLY LIMESTONE LLC, KIRKSVILLE, MO										
Lab #0201	03-23-07	0.9	12.1	8.0	79.0	89.8	2.0	86.8	624	35
Lab #0356	04-20-07	0.9	10.6	7.8	80.7	89.9	2.0	88.0	633	35
Lab #0420	05-02-07	0.8	9.3	7.2	82.7	90.4	1.9	89.3	646	34
Lab #0421	05-04-07	0.6	11.4	7.4	80.6	89.5	1.7	87.9	629	30
GAGE'S FERTILIZER & GRAIN INC, BETHANY, MO										
MK MINERALS INC., MANHATTAN, KS										
Lab #0392	04-27-07	0.1	1.5	2.9	95.5	86.5	0.6	97.6	675	12
GIBSON LIME CO-DEXTER, DEXTER, MO										
VULCAN MATERIALS, JONESBORO, IL										
Lab #0069	02-22-07	4.2	39.7	11.2	44.9	98.7	0.3	61.5	486	4
RUBLE ROCK & LIME INC, PATTERSON, MO										
Lab #0070	02-22-07	4.6	13.8	19.5	62.1	101.5	12.3	77.3	627	190
Lab #0275	04-04-07	7.7	19.2	25.9	47.2	99.5	12.1	67.5	538	163
TOWER ROCK STONE CO, STE GENEVIEVE, MO										
Lab #0071	02-22-07	1.9	36.7	15.0	46.4	98.5	0.5	64.6	509	6
WILLIAMSVILLE STONE CO, POPLAR BLUFF, MO										
Lab #0072	02-22-07	0.7	30.8	16.8	51.7	98.4	12.0	69.5	547	167
HAWK FERTILIZER, BOLIVAR, MO										
CONCO QUARRIES INC Q US 160, WILLARD, MO										
Lab #0522	05-22-07	0.0	18.6	16.7	64.7	98.0	0.3	79.4	622	5
LOUIS HERZTING JR, FREEBURG, MO										
SPRINGFIELD UNDERGROUND, INC., SPRINGFIELD, MO										
Lab #0159	03-09-07	4.0	13.5	7.7	74.8	97.4	0.2	82.8	645	3
Lab #0426	05-03-07	0.5	16.0	15.3	68.2	96.1	0.3	81.4	626	5

19
TABLE 2

AGRICULTURAL LIMING MATERIALS SAMPLED FROM

JANUARY 1 THROUGH JUNE 30, 2007

Dealer and Producer	Date Sampled	U.S. Sieve Fraction, %				%CCE	%Mg	Fineness Factor	Pounds/Ton	
		+8	-8+40	-40+60	-60				ENM	EMg
HOFFMAN & REED INC, TRENTON, MO										
MK MINERALS INC., MANHATTAN, KS										
Lab #0423	05-03-07	0.1	1.3	3.1	95.5	87.6	0.7	97.7	685	14
Lab #0598	06-04-07	0.2	1.7	3.6	94.5	88.4	0.6	97.1	687	12
JEFFCO FERTILIZER, DESOTO, MO										
LANGE STEGMANN FERTILIZER, ST LOUIS, MO										
Lab #0152	03-06-07	0.3	12.5	12.4	74.8	90.9	1.6	85.4	621	27
KELLY LIME & ROCK, LA PLATA, MO										
KELLY LIMESTONE LLC, KIRKSVILLE, MO										
Lab #0093	02-20-07	4.3	39.9	9.3	46.5	90.6	1.5	62.1	450	19
Lab #0196	03-20-07	3.9	39.0	9.2	47.9	91.1	2.0	63.2	460	25
Lab #0245	04-05-07	5.1	38.6	9.0	47.3	90.8	1.9	62.4	453	24
Lab #0387	04-24-07	4.1	38.4	8.4	49.1	90.9	2.0	63.7	464	25
Lab #0554	05-24-07	5.8	36.0	9.6	48.6	90.0	2.1	63.4	456	27
KINDER PLANT FOOD, LICKING, MO										
RUBLE ROCK & LIME INC, PATTERSON, MO										
Lab #0485	05-14-07	5.3	15.9	22.2	56.6	100.9	12.3	73.9	596	182
SPRINGFIELD UNDERGROUND, INC., SPRINGFIELD, MO										
Lab #0486	05-14-07	0.1	10.6	15.5	73.8	97.3	0.4	85.8	667	7
LINNEMAN LIME & FERT, SALISBURY, MO										
NORRIS AGGREGATE PRODUCTS CO - WEST, HUNTSVILLE, MO										
Lab #0376	04-17-07	4.2	47.0	13.4	35.4	89.3	1.4	55.2	394	15
LOHMAN PRODUCERS EXCHANGE, LOHMAN, MO										
KELLY LIMESTONE LLC, KIRKSVILLE, MO										
Lab #0564	05-29-07	0.2	8.7	7.1	84.0	87.0	1.5	90.4	629	27
LYNN SHARPE LIME, WAYNESVILLE, MO										
CONCO QUARRIES INC Q US 160, WILLARD, MO										
Lab #0467	05-09-07	0.3	15.7	14.4	69.6	97.3	0.3	82.2	640	5
MFA AGRI SERVICE, KIRKSVILLE, MO										
KELLY LIMESTONE LLC, KIRKSVILLE, MO										
Lab #0178	03-14-07	5.8	21.8	4.1	68.3	91.2	1.6	76.2	556	24
MFA EXCHANGE, CHAMOI, MO										
MID-MISSOURI LIMESTONE INC-MBQ, KINGDOM CITY, MO										
Lab #0250	04-03-07	0.3	51.4	8.0	40.3	88.5	10.6	58.0	410	123
MFA AGRI SERVICE, BETHANY, MO										
PLATTE RIVER PELLETIZING CO, WEEPING WATER, NE										
Lab #0228	03-29-07	0.4	2.3	3.1	94.2	84.7	0.4	96.6	655	8
MK MINERALS INC., MANHATTAN, KS										
Lab #0390	04-27-07	0.2	1.6	3.6	94.6	85.5	0.6	97.2	665	12
MFA AGRI SERVICE, BROOKFIELD, MO										
KELLY LIMESTONE LLC, KIRKSVILLE, MO										
Lab #0176	03-13-07	1.1	12.2	7.2	79.5	89.8	2.0	86.9	624	35
Lab #0320	04-10-07	1.2	20.3	8.7	69.8	87.9	1.5	80.1	563	24
Lab #0457	05-09-07	1.7	15.1	7.3	75.9	88.9	1.7	84.1	598	29
MFA AGRI SERVICE, BROWNING, MO										
KELLY LIMESTONE LLC, KIRKSVILLE, MO										
Lab #0202	03-23-07	1.5	9.4	7.1	82.0	89.8	1.8	88.6	637	32
Lab #0364	04-20-07	1.2	11.9	7.2	79.7	88.3	1.7	87.0	615	30
Lab #0474	05-16-07	0.7	10.3	8.0	81.0	89.2	1.8	88.4	631	32
MFA AGRI SERVICE, BURLINGTON JUNCTION, MO										
MK MINERALS INC., MANHATTAN, KS										
Lab #0115	03-07-07	0.0	0.5	2.2	97.3	88.0	0.7	98.7	695	14
MFA AGRI SERVICE, CALIFORNIA, MO										
KELLY LIMESTONE LLC, KIRKSVILLE, MO										
Lab #0378	04-24-07	0.9	12.3	8.7	78.1	89.1	1.6	86.4	616	28
MFA AGRI SERVICE, HIGGINSVILLE, MO										
KELLY LIMESTONE LLC, KIRKSVILLE, MO										
Lab #0203	03-27-07	0.6	7.8	7.6	84.0	87.6	1.6	90.5	634	29
MFA AGRI SERVICE, JEFFERSON CITY, MO										
MFA INC, COLUMBIA, MO										
Lab #0110	02-27-07	1.2	8.9	7.6	82.3	90.4	2.0	89.1	644	36
MFA AGRI SERVICE, LANCASTER, MO										
KELLY LIMESTONE LLC, KIRKSVILLE, MO										
Lab #0177	03-14-07	4.4	28.6	4.4	62.6	90.9	1.5	72.4	526	22
Lab #0318	04-09-07	5.2	20.7	5.6	68.5	90.0	1.5	77.0	555	23

20
TABLE 2

AGRICULTURAL LIMING MATERIALS SAMPLED FROM

JANUARY 1 THROUGH JUNE 30, 2007

Dealer and Producer	Date Sampled	U.S. Sieve Fraction, %				%CCE	%Mg	Fineness Factor	Pounds/Ton	
		+8	-8+40	-40+60	-60				ENM	EMg
FARMERS PRODUCE EXCHANGE, LEBANON, MO										
CONCO QUARRIES INC Q US 160, WILLARD, MO										
Lab #0483	05-14-07	0.2	10.5	15.7	73.6	96.9	0.4	85.6	664	7
Lab #0645	06-06-07	0.1	10.2	15.0	74.7	96.8	0.2	86.3	668	3
MFA AGRI SERVICES, LINEVILLE, IA										
PLATTE RIVER PELLETTIZING CO, WEEPING WATER, NE										
Lab #0224	03-28-07	0.7	12.1	7.9	79.3	88.2	1.5	87.1	614	26
MFA AGRI SERVICE, MACON, MO										
KELLY LIMESTONE LLC, KIRKSVILLE, MO										
Lab #0193	03-20-07	7.5	21.0	7.4	64.1	86.5	1.3	73.8	511	19
Lab #0386	04-24-07	3.2	15.6	7.6	73.6	87.0	1.5	82.1	571	25
MFA AGRI SERVICE, MILAN, MO										
KELLY LIMESTONE LLC, KIRKSVILLE, MO										
Lab #0200	03-22-07	5.1	21.8	6.5	66.6	86.5	1.3	76.0	526	20
Lab #0243	04-04-07	4.0	24.7	6.8	64.5	84.6	1.1	74.8	506	16
Lab #0319	04-09-07	4.0	23.4	7.2	65.4	84.9	1.1	75.6	513	17
Lab #0456	05-09-07	5.5	25.0	6.3	63.2	87.0	1.3	73.2	510	19
Lab #0603	06-05-07	4.3	23.0	7.3	65.4	86.2	1.2	75.5	521	18
MFA AGRI SERVICE, OWENSVILLE, MO										
MISSOURI LIME AND MATERIAL CO., INC, EUREKA, MO										
Lab #0157	03-08-07	0.1	0.7	4.0	95.2	98.4	5.2	97.8	770	102
MFA AGRI SERVICE, ST CLAIR, MO										
MFA INC, COLUMBIA, MO										
Lab #0155	03-07-07	0.5	7.9	6.5	85.1	87.6	1.4	91.0	638	25
MFA EXCHANGE, SALEM, MO										
RUBLE ROCK & LIME INC, PATTERSON, MO										
Lab #0207	03-21-07	9.7	17.4	18.9	54.0	101.3	12.2	69.7	565	170
MFA AGRI SERVICE, TRENTON, MO										
KELLY LIMESTONE LLC, KIRKSVILLE, MO										
Lab #0226	03-28-07	4.0	19.4	6.3	70.3	89.5	1.1	78.9	565	17
Lab #0422	05-03-07	1.1	10.4	7.0	81.5	85.3	1.6	88.3	603	28
Lab #0567	05-31-07	2.4	14.0	8.8	74.8	84.4	1.6	83.6	564	27
MFA AGRI SERVICE, UNIONVILLE, MO										
KELLY LIMESTONE LLC, KIRKSVILLE, MO										
Lab #0244	04-04-07	1.0	9.0	6.8	83.2	89.7	1.8	89.5	642	32
Lab #0365	04-20-07	1.3	13.3	8.8	76.6	88.9	1.5	85.2	606	26
Lab #0604	06-05-07	0.9	10.4	7.9	80.8	90.5	1.7	88.1	638	30
MADISON FARM SUPPLY, FREDERICKTOWN, MO										
ASC MINERALS PROCESSING, ALLERTON, IL										
Lab #0068	02-21-07	0.1	0.5	1.9	97.5	88.6	0.4	98.8	700	8
MRM AG SERVICE INC, EAST PRAIRIE, MO										
VULCAN MATERIALS, JONESBORO, IL										
Lab #0276	04-04-07	4.7	41.2	11.5	42.6	96.4	0.7	59.8	461	8
LEO O'LAUGHLIN, MACON, MO										
CENTRAL STONE COMPANY - HUNTINGTON, HANNIBAL, MO										
Lab #0094	02-22-07	1.6	42.9	10.2	45.3	92.8	0.2	62.1	461	2
Lab #0194	03-20-07	1.7	39.3	11.4	47.6	92.2	0.4	64.3	474	5
Lab #0388	04-24-07	1.6	41.8	11.3	45.3	92.5	0.3	62.5	463	4
Lab #0553	05-24-07	1.4	39.2	12.0	47.4	92.4	0.2	64.4	476	3
Lab #0606	06-06-07	2.1	43.1	13.4	41.4	93.1	0.2	60.2	448	2
SHELBY CO. STONE, SHELBY, MO										
Lab #0095	02-22-07	4.2	42.5	9.4	43.9	88.8	1.3	60.2	427	16
Lab #0195	03-20-07	7.0	43.2	9.4	40.4	87.0	1.5	56.8	396	17
Lab #0389	04-24-07	5.0	43.8	9.1	42.1	87.8	1.5	58.5	411	18
Lab #0552	05-24-07	6.0	44.0	9.9	40.1	87.7	1.5	57.0	400	17
Lab #0607	06-06-07	5.2	45.5	9.1	40.2	86.5	1.5	57.0	395	17
LEO O'LAUGHLIN INC, MARCELINE, MO										
CENTRAL STONE COMPANY - HUNTINGTON, HANNIBAL, MO										
Lab #0096	02-22-07	1.2	43.3	10.5	45.0	93.2	0.2	62.1	463	2
Lab #0247	04-06-07	1.7	39.0	11.7	47.6	92.5	0.3	64.4	476	4
Lab #0416	04-30-07	1.3	37.9	11.2	49.6	92.3	0.3	65.8	486	4
Lab #0459	05-10-07	1.4	40.2	10.6	47.8	91.0	0.3	64.2	467	4
SHELBY CO. STONE, SHELBY, MO										
Lab #0097	02-22-07	5.6	44.5	7.8	42.1	87.7	1.4	57.9	406	16
Lab #0417	04-30-07	7.2	44.3	9.6	38.9	85.9	1.5	55.7	383	17
Lab #0458	05-10-07	5.7	42.7	9.2	42.4	86.4	1.5	58.6	405	18

21
TABLE 2

AGRICULTURAL LIMING MATERIALS SAMPLED FROM
JANUARY 1 THROUGH JUNE 30, 2007

Dealer and Producer	Date Sampled	U.S. Sieve Fraction, %				%CCE	%Mg	Fineness Factor	Pounds/Ton	
		+8	-8+40	-40+60	-60				ENM	EMg
R & M FEED, POTOSI, MO										
FRED WEBER INC.-BLUFF CITY MINERALS, ALTON, IL										
Lab #0153	03-06-07	0.5	6.5	5.5	87.5	90.9	2.4	92.4	672	44
RAY CARROLL CO-CARROLLTON, RICHMOND, MO										
MK MINERALS INC., MANHATTAN, KS										
Lab #0266	04-05-07	0.4	0.6	2.0	97.0	86.0	0.8	98.4	677	16
RICHLAND PLANT FOODS, RICHLAND, MO										
CONCO QUARRIES INC Q US 160, WILLARD, MO										
Lab #0469	05-09-07	3.0	13.6	9.0	74.4	98.1	0.2	83.2	653	3
SUR-GRO PLANT FOOD, SHERIDAN, MO										
MK MINERALS INC., MANHATTAN, KS										
Lab #0112	03-06-07	0.0	0.8	2.8	96.4	89.4	0.7	98.3	703	14
ZWEERINK-AGRI SERVICES, CROCKER, MO										
CONCO QUARRIES INC Q US 160, WILLARD, MO										
Lab #0468	05-09-07	2.6	15.1	10.7	71.6	98.2	0.2	81.8	643	3



Agricultural Experiment Station
University of Missouri-Columbia

Office of the Director
Fertilizer Control Services

Columbia, MO 65211

PHONE (573) 882-3891
(573) 882-4891

FAX (573) 882-4543

August 8, 2007

TO: AG LIMING MATERIALS PRODUCERS AND DISTRIBUTORS

SUBJECT: PRODUCER PERMITS TO SELL AG LIMING MATERIALS IN MISSOURI FOR
FISCAL YEAR 2007-08.

The following producers have been issued permits to sell ag liming materials in Missouri for the fiscal year ending June 30, 2008. You will be notified when additional permits are issued.

Sales to other registered producers are exempt from inspection fee, but must be reported as a sales transaction semi-annually.

The last producer selling agricultural liming materials to a non-producer is responsible for paying the tonnage inspection fee to the Director of the Missouri Agricultural Experiment Station, Columbia, Missouri (Missouri Agricultural Liming Materials Law 266.500 to 266.550).

0010	76 QUARRY	1726 QUARRY ROAD	MANSFIELD MO 65704
0020	ADRIAN QUARRY LLC	PO BOX 240	ADRIAN MO 64720
0040	ALBY QUARRY	P.O. BOX 206	CARLINVILLE IL 62626
0070	ANNA QUARRY	P.O. BOX 180	ANNA IL 62906
0080	APAC-MISSOURI, INC - BAGNELL 13	347 BLUE SPRINGS RD	ELDON MO 65026
0090	APAC-MISSOURI, INC. - BOONVILLE	PO BOX 1117	COLUMBIA MO 65205-1117
0100	APAC-MISSOURI GALLATIN	23859 OTTER AVE	GALLATIN MO 64640
0110	APAC-MISSOURI, INC. - LANAGAN	PO BOX 1117	COLUMBIA MO 65205
0120	APAC-MISSOURI, INC. - LINN CREEK	1410 BUSINESS PARK RD	LINN CREEK MO 65052
0130	APAC-MISSOURI, INC. - BUSIEK	PO BOX 1117	COLUMBIA MO 65205
0140	APAC-MISSOURI, INC. - MARSHALL	RT 1 BOX 33	MARSHALL MO 65340
0150	APAC-MISSOURI, INC. - MIAMI	PO BOX 1117	COLUMBIA MO 65205
0160	APAC-MISSOURI INC. - ROARK CREEK	PO BOX 1117	COLUMBIA MO 65205
0170	ARKANSAS LIME COMPANY, INC.	P O BOX 2356	BATESVILLE AR 72503
0180	ASC MINERALS PROCESSING	PO BOX 200	ALLERTON IL 61810
0200	ASH GROVES AGGREGATES-DEVER	HWY 52 WEST-BOX 70	BUTLER MO 64730
0210	ASH GROVE AGGREGATES-FAIR GROVE	HWY 52 WEST BOX 70	BUTLER MO 64730
0220	ASH GROVE AGGREGATES INC-BUTLER	HWY 52 WEST-BOX 70	BUTLER MO 64730
0230	ASH GROVE AGGREGATES INC-BUTLER S&K	HWY 52 WEST-BOX 70	BUTLER MO 64730
0250	ASH GROVE AGGREGATES INC-LACYGNE	HWY 52 WEST-BOX 70	BUTLER MO 64730
0260	ASH GROVE AGGREGATES INC-MARSHFIELD	HWY 52 WEST-BOX 70	BUTLER MO 64730
0270	ASH GROVE AGGREGATES INC-MONTEVALLO	HWY 52 WEST-BOX 70	BUTLER MO 64730
0280	ASH GROVE AGGREGATES INC-OSCEOLA	HWY 52 WEST-BOX 70	BUTLER MO 64730
0290	ASH GROVE AGGREGATES, INC-SEAGRAVES	HWY 52 WEST-BOX 70	BUTLER MO 64730
0300	ASH GROVE AGGREGATES INC.-STOCKTON	HWY 52 WEST-BOX 70	BUTLER MO 64730
0310	ASH GROVE AGGREGATES INC-WHEATLAND	HWY 52 WEST-BOX 70	BUTLER MO 64730
0320	ASH GROVE AGGREGATES INC-BOLIVAR	HWY 52 WEST-BOX 70	BUTLER MO 64730
0330	ASH GROVE AGGREGATES - KIFER	HWY 52 WEST - BOX 70	BUTLER MO 64730
0340	ASH GROVE AGGREGATES INC-BUFFALO	HWY 52 WEST-BOX 70	BUTLER MO 64730
0350	BAILEY QUARRIES INC-CHEAPEAKE Q.	22699 HWY 174	MT VERNON MO 65712
0370	BAILEY QUARRIES INC-JANE	ROUTE #1-BOX 1043	JANE MO 64856
0380	BAILEY QUARRIES, INC.-MADRY QUARRY	RT. #1 BOX 96AA	VERONA MO 65769
0390	BAILEY QUARRIES - SARCOXIE	P.O. BOX 430	REPUBLIC MO 65837
0400	BAILEY QUARRIES INC-STOCKTON	16370 S 1225 RD	STOCKTON MO 65785
0410	BAILEY QUARRIES, INC.-WASHBURN	PO BOX 430	REPUBLIC MO 65738

0420	BARBER & SONS AGGREGATES	11400 S 7 HWY	LEE'S SUMMIT MO 64063
0430	BARRETT MATERIALS INC	3880 BOEUF CREEK RD	NEW HAVEN MO 63068
0450	BELLE PLANT FOODS	2214 HWY 28	BELLE MO 65013
0460	BOONE QUARRIES INC - WEST	2604 N. STADIUM BLVD.	COLUMBIA MO 65202
0470	BOONE QUARRIES INC - NORTH	2604 N STADIUM BLVD	COLUMBIA MO 65202
0480	BOONE QUARRIES - EAST	2604 N STADIUM BLVD	COLUMBIA MO 65202
0490	BURFORDVILLE MATERIALS INC	1211 STATE HWY OO	WHITEWATER MO 63785
0520	CAPITAL QUARRIES CO., INC.-ARCADIA	PO BOX 27	ARCADIA MO 63621
0530	CAPTIAL QUARRIES CO., INC- EUGENE	822 WEST STADIUM BLVD	JEFFERSON CITY MO 65109
0540	CAPITAL QUARRIES INC-HIGH HILL	1164 TREE FARM RD	HIGH HILL MO 63350
0550	CAPITAL QUARRIES, INC-STADIUM WEST	PO BOX 105050	JEFFERSON CITY MO 64110-5050
0560	CAPITAL QUARRIES INC-ROLLA Q #4	PO BOX 105050	JEFFERSON CITY MO 65110-5050
0570	CAPITAL QUARRIES INC-CALIFORNIA Q#5	PO BOX 105050	JEFFERSON CITY MO 65110-5050
0580	CAPITAL QUARRIES INC.-HERMANN #14	PO BOX 105050	JEFFERSON CITY MO 65110
0590	CAPITAL QUARRIES INC-SULLIVAN	3105 HWY FF	BOURBON MO 65441
0600	CARROLL COUNTY STONE, INC.	PO BOX 430	REPUBLIC MO 65738
0610	CARTHAGE CRUSHED LIMESTONE	P.O. BOX 1086	CARTHAGE MO 64836
0620	CENTRAL STONE COMPANY - HUNTINGTON	46445 SWEETBAY LANE	HANNIBAL MO 63401
0630	CENTRAL STONE COMPANY-ANTONIA	46445 SWEETBAY LANE	HANNIBAL MO 63401-7211
0640	CENTRAL STONE COMPANY - BETHEL	6015 SHELBY 2342	SHELBYVILLE MO 63469-2237
0650	CENTRAL STONE CO - FORT BELLE - #31	14200 LEWIS & CLARK	FLORISSANT MO 63034
0660	CENTRAL STONE COMPANY - PARIS	16527 HWY 15	PARIS MO 65275
0670	CENTRAL STONE COMPANY - CURRYVILLE	15435 PIKE 27	CURRYVILLE MO 63339-2114
0680	CENTRAL STONE COMPANY - PERRY	46445 SWEETBAY LANE	HANNIBAL MO 63401-7211
0690	CENTRAL STONE COMPANY - EWING	46445 SWEETBAY LANE	HANNIBAL MO 63401-7211
0700	CENTRAL STONE COMPANY - TAYLOR	7040 COUNTY RD 344	TAYLOR MO 63471-0095
0710	CLEVER STONE CO	1075 WISE HILL RD	CLEVER MO 65631
0730	CONCO QUARRIES	PO BOX 50685	SPRINGFIELD MO 65805
0740	CONCO QUARRIES INC Q US 160	P.O. BOX 172	WILLARD MO 65781
0750	COUNTY LINE QUARRY	58 BETHEL CHURCH RD	WELLSVILLE MO 63384
0760	CRAWFORD LIME & MATERIAL CO	63 WEBER RD	CUBA MO 65453
0770	CRIDER BROTHERS LIME CO., INC.	PO BOX 35	EMINENCE MO 65466
0780	DOSS & HARPER STONE CO.	PO BOX 126	HOUSTON MO 65483
0790	DOSS & HARPER STONE CO	P O BOX 888	WEST PLAINS MO 65775
0820	EVERETT QUARRIES #1-LATHROP	PO BOX 276	PLATTSBURG MO 64477
0830	EVERETT QUARRIES #6-KING	PO BOX 276	PLATTSBURG MO 64477
0840	EVERETT QUARRIES #53-CAMERON	PO BOX 276	PLATTSBURG MO 64477
0850	EVERETT QUARRIES #54-GOWER	PO BOX 276	PLATTSBURG MO 64477
0860	EVERETT QUARRIES #59-STANBERRY	P.O. BOX 276	PLATTSBURG MO 64477
0870	FALL VALLEY STONE, INC.	P.O. BOX 565	REPUBLIC MO 65738
0880	FARMERS LITTER & LIME	2838 BREWER RD	SIKESTON MO 63801
0890	FISCHER QUARRIES LLC	21427 DUNHAM DR	HUGHESVILLE MO 65334
0910	GABEL STONE COMPANY INC.	2092 COUNTY RD 5900	WILLOW SPRINGS MO 65793
0930	GLASGOW QUARRIES-GILLIAM	ROUTE 1-BOX 107	GILLIAM MO 65330
0940	GLASGOW QUARRIES - MARCELINE	ROUTE 2	MARCELINE MO 64658
0990	HILTY QUARRIES, INC. - QUARLES	PO BOX 407	CLINTON MO 64735
1000	HILTY QUARRIES, INC. - MONTROSE	PO BOX 407	CLINTON MO 64735
1010	HILTY QUARRIES, INC- SOUTH-DELL JCT	PO BOX 407	CLINTON MO 64735
1020	HILTY QUARRIES, INC - TIGHTWAD	PO BOX 407	CLINTON MO 64735
1030	HILTY QUARRIES, INC. - URICH	PO BOX 407	CLINTON MO 64735
1040	HILTY QUARRIES INC.-WARRENSBURG	P.O. BOX 407	CLINTON MO 64735
1050	HOSTETLER QUARRY	STERLING LANE	BUFFALO MO 65622
1060	HUNT-MARTIN MATERIALS	35932 HIGHWAY 10	RAYVILLE MO 64084
1080	HUNT-MARTIN MATERIALS - STAMPER	13500 NW INTERURBAN RD	KANSAS CITY MO 64163-1314
1100	HUTCHENS CONSTRUCTION-PURDY	1007 MAIN	CASSVILLE MO 65625
1110	HUTCHENS CONSTRUCTION-EAGLE ROCK	1007 MAIN	CASSVILLE MO 65625
1120	HUTCHENS CONSTRUCTION CO-SHELL KNOB	1007 MAIN ST	CASSVILLE MO 65265
1130	HUTCHENS CONSTRUCTION-WASHBURN	1007 MAIN	CASSVILLE MO 65625
1140	JENKINS QUARRY	P.O. BOX 542	CASSVILLE MO 65625-0542
1160	JOPLIN STONE CO Q DUENWEG	4378 COUNTY RD 190	JOPLIN MO 64801
1170	KELLY LIMESTONE LLC	PO BOX 725	KIRKSVILLE MO 63501
1190	KEMP STONE, INC	18350 S. 590 RD	FAIRLAND OK 74343
1210	KERFORD LIMESTONE CO	PO BOX 449	WEeping WATER NE 68463
1230	KNOX COUNTY STONE CO	PO BOX 39	EDINA MO 63537-0039
1260	L & W QUARRIES, INC - CLARKDALE #8	PO BOX 335	CENTERVILLE IA 52544
1270	L & W QUARRIES, INC - WALNUT CITY	PO BOX 335	CENTERVILLE IA 52544
1280	L & W QUARRIES INC.	P.O. BOX 335	CENTERVILLE IA 52544
1290	LAFARGE QUARRY	P.O. BOX 1232	SEDALIA MO 65302-1232
1300	LAFARGE CORPORATION	P.O. BOX 1232	SEDALIA MO 65302-1232
1320	LILE QUARRY INC.	2868 N. FR 231	STRAFFORD MO 65757
1380	MAGRUDER LIMESTONE CO-ASHLEY	13614 PIKE 496	BOWLING GREEN MO 63334
1390	MAGRUDER LIMESTONE CO, INC.-BOWLING	13614 PIKE 496	BOWLING GREEN MO 63334
1400	MAGRUDER LIMESTONE CO-FRANKFORD	13614 PIKE 496	BOWLING GREEN MO 63334
1410	MAGRUDER LIMESTONE - SILEX QUARRY	255 WATSON RD	TROY MO 63379
1420	MAGRUDER LIMESTONE CO Q TROY	255 WATSON ROAD	TROY MO 63379
1430	MANSFIELD LIME & STONE	1726 QUARRY ROAD	MANSFIELD MO 65704

1470	MARTIN MARIETTA AGG - APPLETON	521 QUARRY LN	PERRYVILLE MO 63775
1480	MARTIN MARIETTA AGGREGATE-FREDONIA	297 FREDONIA QUARRY ROAD	FREDONIA KY 42411
1490	MARTIN MARIETTA AGG-PERRYVILLE	521 QUARRY LANE	PERRYVILLE MO 63775
1520	MARTIN MARIETTA AGGREGATES INC	15601 WEEPING WATER ROAD, POB 448	WEEPING WATER NE 68463
1530	MERTENS CONST CO-AUXVASSE	P.O. BOX 52	KINGDOM CITY MO 65262
1540	MERTENS CONST CO-Q-REFORM	PO BOX 52	KINGDOM CITY MO 65252
1550	MFA INC	201 RAY YOUNG DR	COLUMBIA MO 65201-3599
1560	MID-COUNTY MATERIALS	503 HISTORIC 66 WEST	WAYNESVILLE MO 65583
1570	MID-MISSOURI LIMESTONE INC-MBQ	P O BOX 52	KINGDOM CITY MO 65262
1580	MID-MISSOURI LIMESTONE, INC.-HOUSTO	PO BOX 52	KINGDOM CITY MO 65262
1590	MID-MISSOURI LIMESTONE-RIGGS	PO BOX 52	KINGDOM CITY MO 65262
1610	MIDWEST MINERALS INC - JASPER	PO BOX 412	PITTSBURG KS 66762
1640	MISSISSIPPI LIME COMPANY	16147 US HIGHWAY 61	STE GENEVIEVE MO 63670
1660	MISSOURI LIME AND MATERIAL CO., INC	6800 BUSSEN RD	EUREKA MO 63025
1670	MK MINERALS INC.	315 HOUSTON ST STE C	MANHATTAN KS 66502-6172
1690	MO VALLEY GRAIN & PELLETIZING	122 S. 1ST ST.	MISSOURI VALLEY IA 51555
1700	MORRIS ROCK	RR#1-BOX 47A	DEERFIELD MO 64741
1710	MOUNTAIN GROVE QUARRY	2504 LIMESTONE DR	MOUNTAIN GROVE MO 65711
1720	MUENKS BROTHERS QUARRIES, INC-WEST	3857 HIGHWAY 50 W	LOOSE CREEK MO 65054
1730	MUENKS BROS. QUARRY	3857 HIGHWAY 50 W	LOOSE CREEK MO 65054
1740	KEITH MURRAY	9599 HWY M	PLATO MO 65552
1760	NEMO SAND & GRAVEL, QUARRY	HC 77 BOX 651	PITTSBURG MO 65774
1770	NORRIS AGGREGATE PROD. CO.-BARNARD	PO BOX 662	OTTUMWA IA 52501
1780	NORRIS AGGREGATES PROD. CO.-BETHANY	PO BOX 662	OTTUMWA IA 52501
1790	NORRIS AGGREGATE PROD. CO. - BREIT	PO BOX 662	OTTUMWA IA 52501
1800	NORRIS AGGREGATE PRDCTS-BLUE MOUND	P.O. BOX 662	OTTUMWA IA 52501
1810	NORRIS AGGREGATE PROD. CO.-GALLATIN	PO BOX 662	OTTUMWA IA 52501
1820	NORRIS AGGREGATE PROD. CO.- GOODEN	PO BOX 662	OTTUMWA IA 52501
1830	NORRIS AGGREGATE PRODUCTS CO - EAST	PO BOX 142	HUNTSVILLE MO 65259
1840	NORRIS AGGREGATE PROD. CO.-JEFFRIES	PO BOX 662	OTTUMWA IA 52501
1850	NORRIS AGGREGATE PROD. CO.-MATTLAND	PO BOX 662	OTTUMWA IA 52501
1860	NORRIS AGGREGATE PROD. CO.- MERCER	PO BOX 662	OTTUMWA IA 52501
1880	NORRIS AGGREGATE PROD CO-PRINCETON	PO BOX 662	OTTUMWA IA 52501
1890	NORRIS AGGREGATE PROD. CO.- TRENTON	PO BOX 662	OTTUMWA IA 52501
1900	NORRIS AGGREGATE PRODUCT CO-AMAZONI	PO BOX 662	OTTUMWA IA 52501
1910	NORRIS AGGREGATE PRODUCTS-NEW POINT	PO BOX 662	OTTUMWA IA 52501
1920	OSAGE QUARRIES, INC	PO BOX 52	KINGDOM CITY MO 65262
1930	PELLETIZING COMPANY INC	248 ROGERS RD	GORDONSVILLE TN 38563
1940	PHENIX ROCK	12940 W FARM ROAD 34	ASH GROVE MO 65604
1970	PRESTAGE QUARRIES INC	P O BOX 787	TIPTON MO 65081
2010	GRISHAM GRADING & EXCAVATING, INC	18975 HWY 371	PLATT CITY MO 64079
2020	S & A CONSTRUCTION LTD	P.O. BOX 20	ALLENDALE MO 64420
2040	SCHILDBERG CONST. CO.-BEDFORD Q.	P O BOX 358	GREENFIELD IA 50849
2050	SCHILDBERG CONST. CO.-GRAHAM MO Q	P O BOX 358	GREENFIELD IA 50849
2060	SCHILDBERG CONST. CO.-SHAMBAUGH Q	P.O. BOX 358	GREENFIELD IA 50849
2070	SCHILDBERG CONST. CO.-WATTERSON	PO BOX 358	GREENFIELD MO 50849
2080	SHAWNEE STONE - CYPRESS PLANT	8395 STATE RT 37 SOUTH	CYPRESS IL 62923
2090	SHAWNEE STONE - JONESBORO PLANT	1275 JONESBORO QUARRY ROAD	ANNA IL 62906
2110	SIEGEL GRAVEL & EXCAVATING	9175 BLUE BIRD DR	VERSAILLES MO 65084
2120	SCAGGS ROCK-N-LIME, INC.	PO BOX 106	PATTERSON MO 63956
2130	SOUTH CENTRAL COOP	1301 MAIN STREET	CAINSVILLE MO 64632-9132
2140	SMASAL AGGREGATE	PO BOX 172	LINCOLN MO 65338
2150	SPRINGFIELD UNDERGROUND, INC.	P.O. BOX 2240	SPRINGFIELD MO 65801-2240
2160	S-S-S INC	PO BOX 474	LOUISIANA MO 63353
2170	STRACK STONE	5120 STATE HWY 74	CAPE GIRARDEAU MO 63701
2200	T & M STONE LLC	530 E 460TH RD	FAIR PLAY MO 65649
2210	TABLE ROCK ASPHALT CONST CO INC	PO BOX 1165	BRANSON MO 65615
2220	TABLE ROCK ASPHALT CONST CO INC-KIM	PO BOX 1165	BRANSON MO 65615
2230	TAYLOR QUARRIES	670 N DADE 1	LOCKWOOD MO 65682
2250	TOWER ROCK STONE CO	PO BOX 4248	SCOTT CITY MO 63780-4248
2260	TOWER ROCK STONE CO	ROUTE 2-LOWER FRENCHMAN RD-BOX 111	STE GENEVIEVE MO 63670
2280	TRAGER LIMESTONE	6468 ST HWY Y	CHILLICOTHE MO 64601
2290	TRAGER LIMESTONE LLC	9010 DES MOINES	HAMILTON MO 64644
2310	UNITED SUPPLIERS	PO BOX 538	ELDORA IA 50627
2320	VAN BUREN STONE c/o GIBBS TRUCKING	4210 HIGHWAY T	POPLAR BLUFF MO 63901
2330	WADE AG PRODUCTS-MAIN OFC	PO BOX 38	LACYGNE KS 66040
2340	TRAGER LIMESTONE	21008 UNITY AVE	GALLATIN MO 64640
2350	WADE AG PRODUCTS Q DREXEL	P O BOX 38	LACYGNE KS 66040
2360	WASHINGTON COUNTY AGGREGATES, INC.	PO BOX 399	POTOSI MO 63664
2450	WILKERSON BROS QUARRY	20429 MONROE RD 962	PARIS MO 65275
2460	WILLARD ASPHALT - #18 SLEEPER	PO BOX 869	LEBANON MO 65536
2470	WILLARD ASPHALT PAVING,- #19	PO BOX 869	LEBANON MO 65536
2480	WILLARD QUARRY-SLEEPER	PO BOX 1183	LEBANON MO 65536
2490	WILLARD QUARRIES- ST ROBERT	13875 TULSA RD	ST. ROBERT MO 65584
2500	WILLIAMSVILLE STONE CO	PO BOX 234	POPLAR BLUFF MO 63902

The Influence of Liming Acid Soils on Plant Available Phosphorus, Magnesium, and Aluminum Levels in Tall Fescue

R.J. Miles and D.G. Blevins, Co-PI's
E.J. Hamilton, Graduate Student

Progress for 2006/Final Report

INTRODUCTION

The objectives of this study were to determine: 1.) the influence of calcitic and dolomitic aglime of the release and uptake of “fixed” phosphorus for use by tall fescue and, 2.) the influence of these liming materials on the availability and uptake of magnesium and aluminum for tall fescue. This project was initiated in the late summer and early fall of 2004 with the selection of field plots at the Southwest Research Center (SWC) at Mt. Vernon and the Bradford Research and Extension Center (BREC) in Columbia. The soil resource at the SWC is a Gerald (fine, mesic, active, Aeric Fraguaqualf) while the soil resource supporting the research plots at BREC is the Mexico (fine, smectitic, mesic Aeric Vertic Epiaqualf). Plots 10 ft by 25 ft with 10 ft borders were utilized at each location with each treatment being replicated 6 times. Limestone treatments which were applied in 2004 at each location were calcitic and dolomitic limestone applied at 0, 0.5X, 1.0X, and 2.0X relative to soil test recommendations. Collared leaves were initially sampled in January 2005 and then monthly through April for analysis of calcium (Ca), magnesium (Mg), potassium (K), phosphorus (P), and aluminum (Al) content. Additionally, forage harvests were performed in May and August at each location. Leaf samples were harvested again beginning in October 2005 and continued through April 2006. Also soil tests were conducted on the limed plots 19 months after initiation of liming.

ACCOMPLISHMENTS

Forage yield data for the 2005 and 2006 seasons are provided in Figures 1 through 6. The two year total forage yield was increased by both limestone applications at the SWC, but no consistent trend was observed at BREC. The response to increased limestone appeared to be more apparent in the May harvest rather than the August harvest.

With liming, leaf K, nitrogen (N), boron (B), and manganese (Mn) concentrations decreased, whereas leaf Ca (Figure 7), molybdenum (Mo), and sodium (Na) concentrations increased. Leaf P (Figures 8-11), Al, iron (Fe), Zinc (Zn), and copper (Cu) concentrations remained relatively unaltered. As a result of the consistent leaf P concentrations with liming, the long-term benefit to the producer may be increased by fertilizer P applied after the liming treatment rather than by the increased availability of residual soil P. Leaf Mg concentrations (Figures 12-13) decreased with calcitic limestone applications, but increased with the application of dolomitic limestone. Limestone treatments had little influence on leaf Al concentrations. The resultant leaf K, Mg, and Ca concentrations (Figures 14-15) provided a reduction in the grass tetany ratio of tall fescue leaves by liming could provide a lesser incident of grass tetany in the beef cow.

In general, changes in leaf concentrations on mineral elements reflected those in soil test values 19 months after liming. Soil pH-salt values were increased while neutralizable acidity (Figures 16-19), exchangeable K, and extractable Mn decreased with increasing limestone application. The addition of calcitic limestone increased soil test Ca with little influence on soil test Mg; whereas, dolomitic limestone applications increased soil test Mg with lesser increases in soil test Ca. Soil organic matter (Figures 20 and 21); Bray P-I; Bray P-II; Zn; Cu; and Fe values were not increased by increased limestone application.

This study resulted in an M.S. thesis by Elizabeth Hamilton titled “Elemental Concentration Changes in Soil and Stockpiles Tall Fescue Leaves After Liming” (December 2006). A copy of this thesis will be supplied by CD to the Director of the Fertilizer/Ag Lime Control Services. A presentation on this topic related to the influence on grass tetany was presented at the 2006 SWC Field Day by Elizabeth Hamilton. Additionally, an oral presentation by Elizabeth Hamilton (Hamilton, et. al. 2006) was presented at the 2006 American Society of Agronomy meeting in Indianapolis. Currently two research manuscripts are being written from two of the chapters from the M.S. thesis for submission to the refereed journal, *Plant & Soil*.

Work over the next three months on soil Al will continue to elucidate the types of extractable Al available by treatment. Extractions have been performed with analysis to be completed in the near future.

May 2006 Forage Harvest

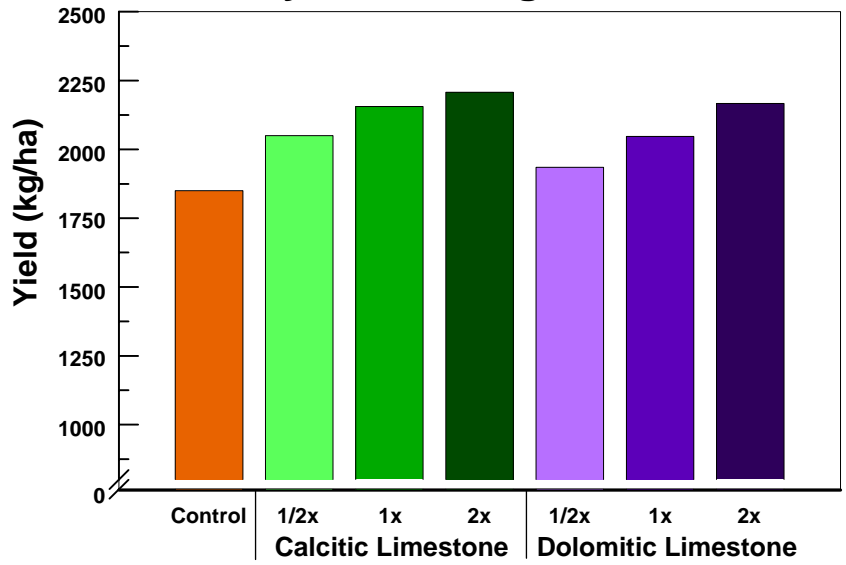


Figure 1. May 2006 forage harvest of tall fescue treated with 0x, 1/2x, 1x, and 2x the recommended rate of dolomitic and calcitic limestone at SWC. Means (n=6). LSD (P<0.05) = 290.30 for comparing treatments.

August 2006 Forage Harvest

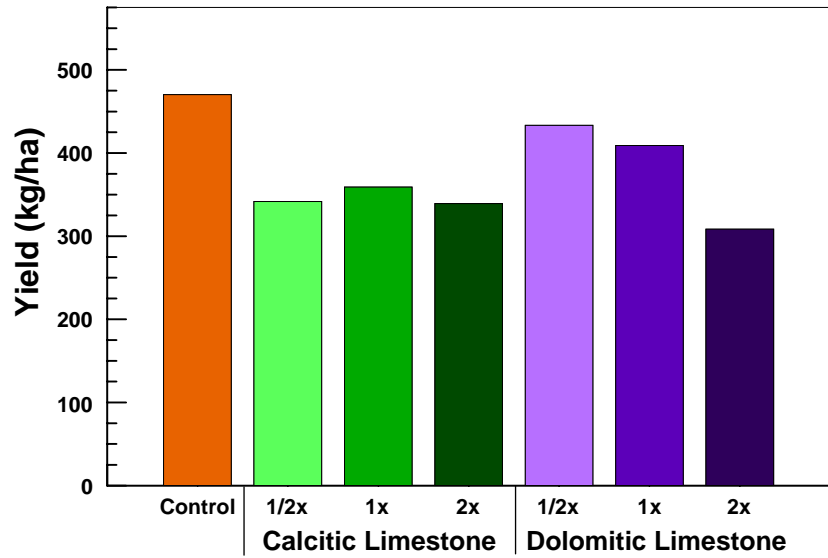


Figure 2. August 2006 harvest of tall fescue treated with 0x, 1/2x, 1x, and 2x the recommended rate of dolomitic and calcitic limestone at SWC. Means (n=6). LSD (P<0.05) = 91.18 for comparing treatments.

Two Year Total Forage Harvest

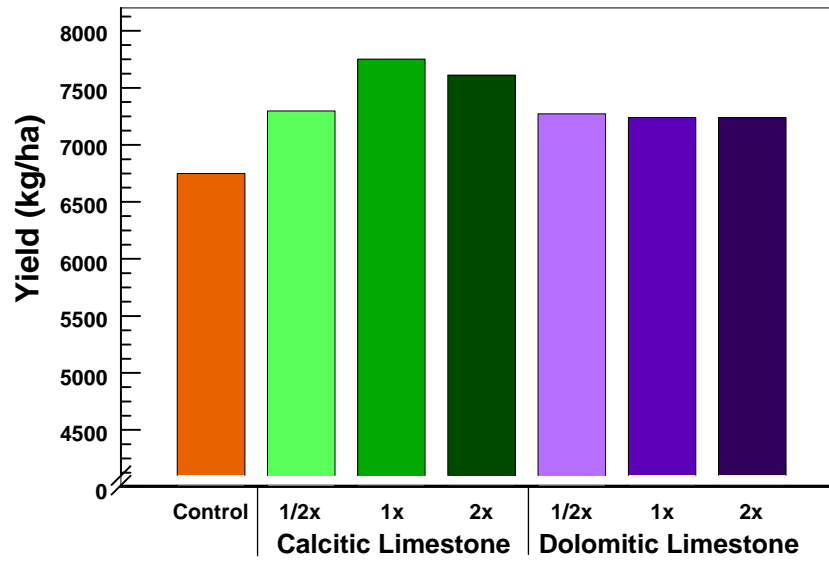


Figure 3. Two year total forage harvest of tall fescue treated with 0x, 1/2x, 1x, and 2x the recommended rate of dolomitic and calcitic limestone at SWC. Means (n=6). LSD (P<0.05) = 602.58 for comparing treatments.

May 2006 Forage Harvest

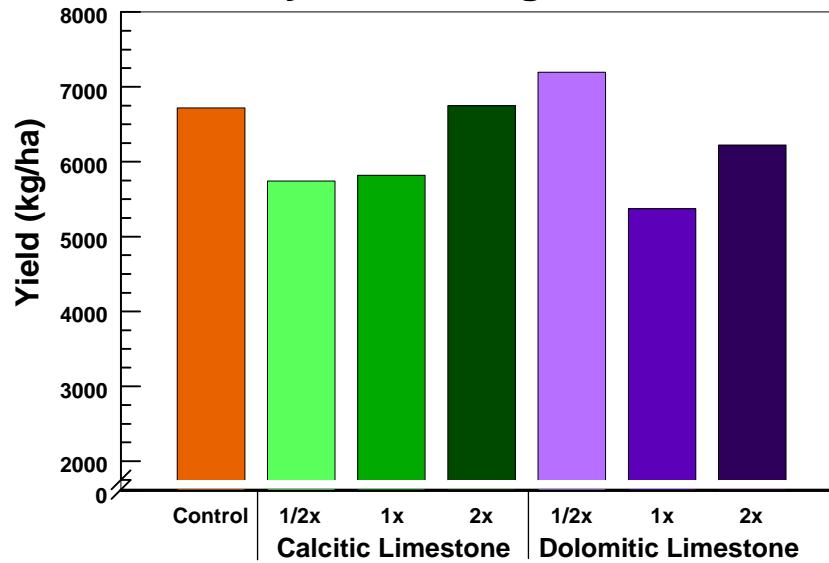


Figure 4. May 2006 forage harvest of tall fescue treated with 0x, 1/2x, 1x, and 2x the recommended rate of dolomitic and calcitic limestone at BREC. Means (n=6). LSD (P<0.05) = 1209.23 for comparing treatments.

August 2006 Forage Harvest

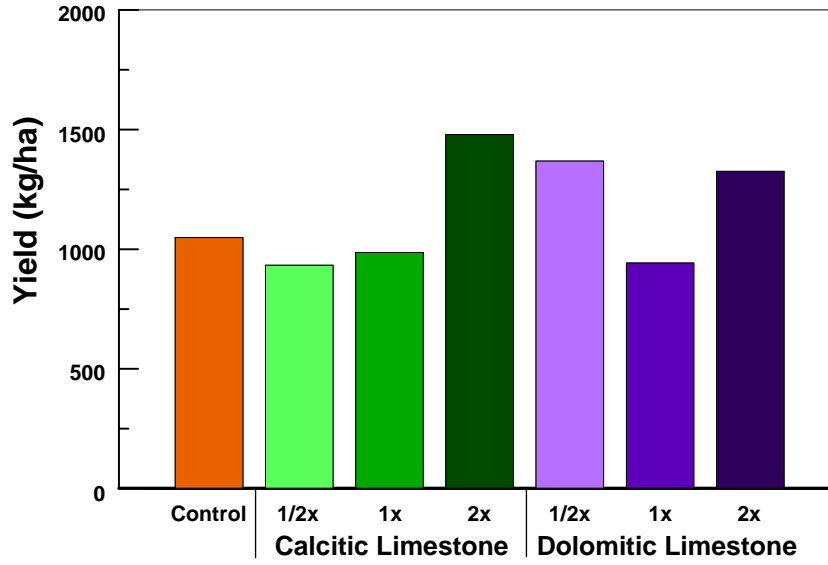


Figure 5. August 2006 forage harvest of tall fescue treated with 0x, 1/2x, 1x, and 2x the recommended rate of dolomitic and calcitic limestone at BREC. Means (n=6). LSD (P<0.05) = 419.87 for comparing treatments.

Two Year Total Forage Harvest

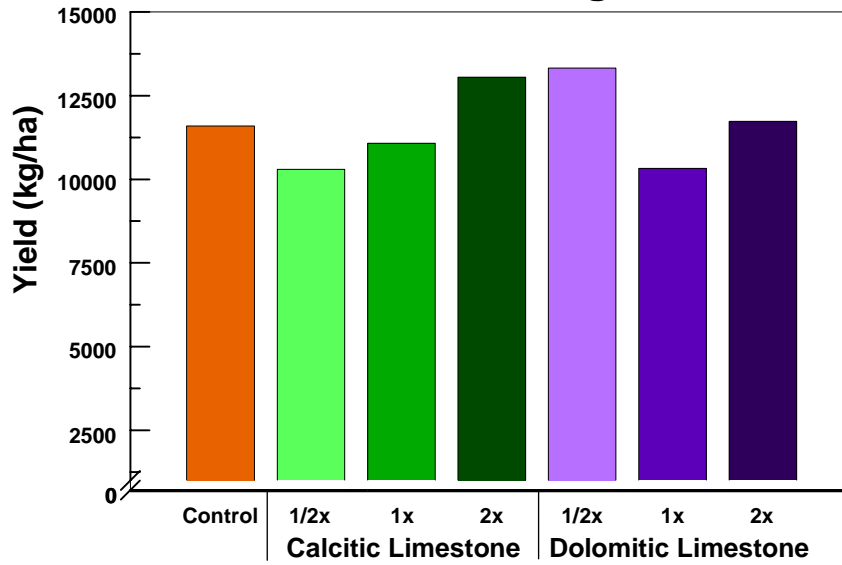


Figure 6 Two year total forage harvest of tall fescue treated with 0x, 1/2x, 1x, and 2x the recommended rate of dolomitic and calcitic limestone at BREC. Means (n=6). LSD (P<0.05) = 1867.90 for comparing treatments.

Leaf Calcium

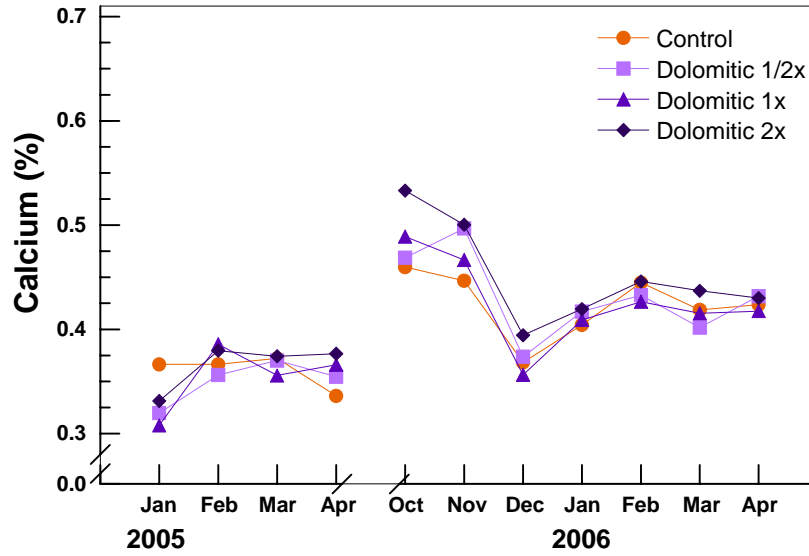


Figure 7. Calcium concentrations in stockpiled tall fescue leaves harvested monthly from plots treated with 0x, 1/2x, 1x, and 2x the recommended rate of dolomitic limestone at SWC. Means (n=6). LSD (P<0.05) = 0.043 for comparing treatments within a month and LSD (P<0.05) = 0.016 for comparing months within the same treatment.

Leaf Phosphorus

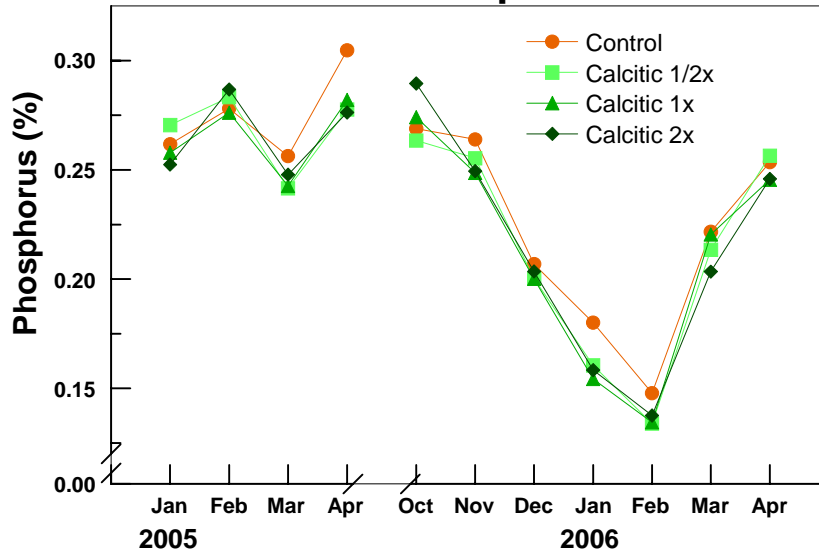


Figure 8 Phosphorus concentrations in stockpiled tall fescue leaves harvested monthly from plots treated with 0x, 1/2x, 1x, and 2x the recommended rate of calcitic limestone at SWC. Means (n=6). LSD (P<0.05) = 0.022 for comparing treatments within a month and LSD (P<0.05) = 0.008 for comparing months within the same treatment.

Leaf Phosphorus

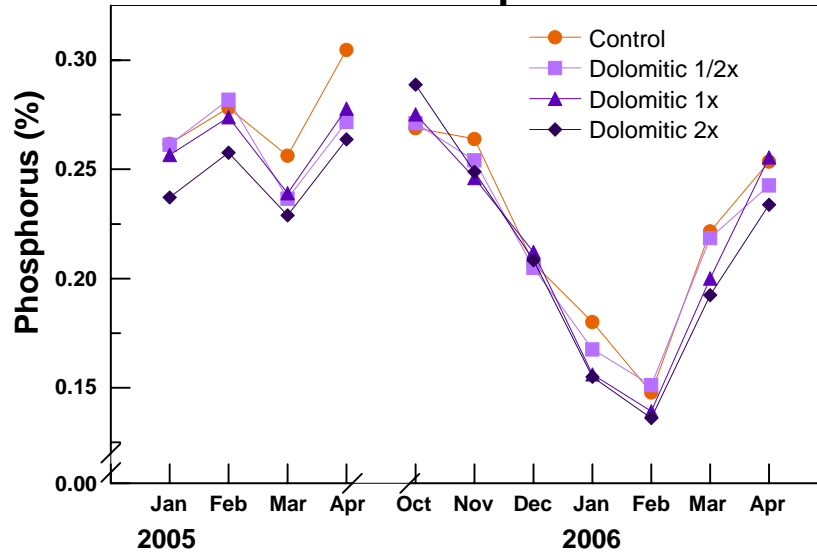


Figure 9. Phosphorus concentrations in stockpiled tall fescue leaves harvested monthly from plots treated with 0x, 1/2x, 1x, and 2x the recommended rate of dolomitic limestone at SWC. Means (n=6). LSD (P<0.05) = 0.022 for comparing treatments within a month and LSD (P<0.05) = 0.008 for comparing months within the same treatment.

Leaf Phosphorus

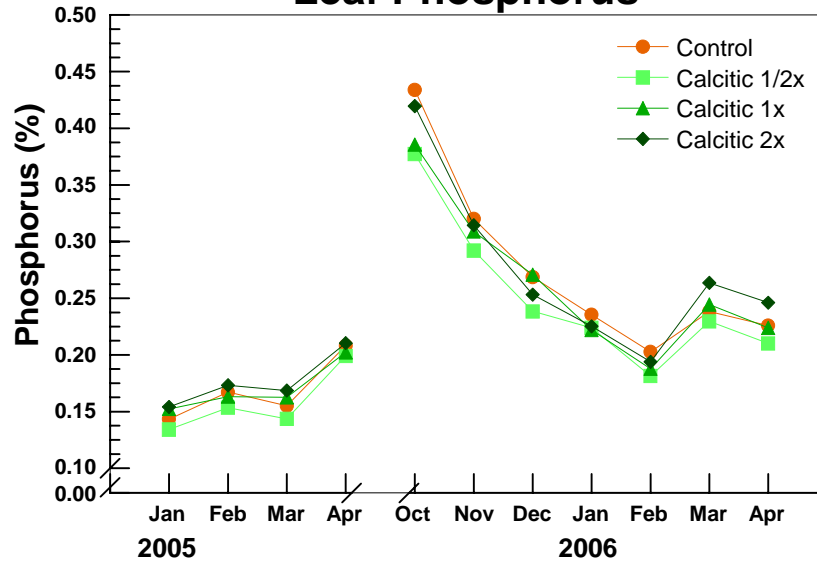


Figure 10. Phosphorus concentrations in stockpiled tall fescue leaves harvested monthly from plots treated with 0x, 1/2x, 1x, and 2x the recommended rate of calcitic limestone at BREC. Means (n=6). LSD (P<0.05) = 0.034 for comparing treatments within a month and LSD (P<0.05) = 0.010 for comparing months within the same treatment.

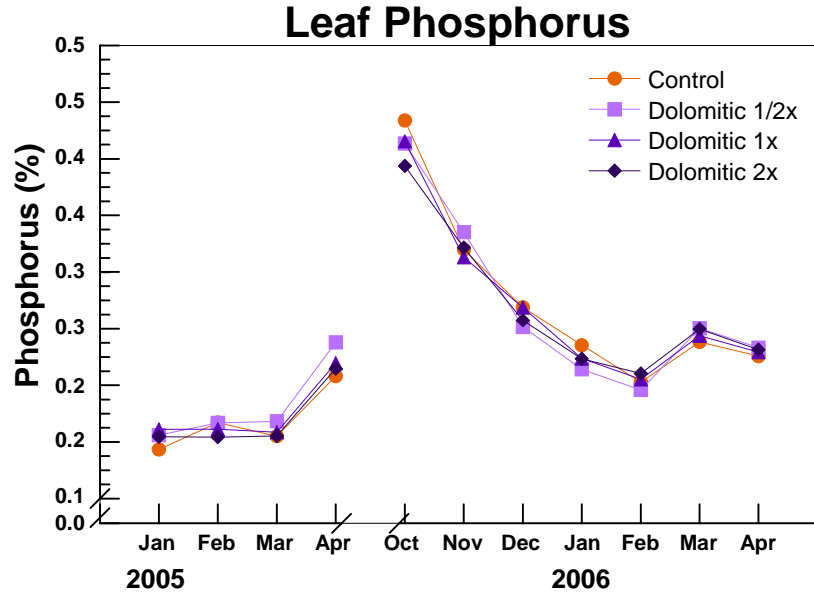


Figure 11. Phosphorus concentrations in stockpiled tall fescue leaves harvested monthly from plots treated with 0x, 1/2x, 1x, and 2x the recommended rate of dolomitic limestone at BREC. Means (n=6). LSD (P<0.05) = 0.034 for comparing treatments within a month and LSD (P<0.05) = 0.010 for comparing months within the same treatment.

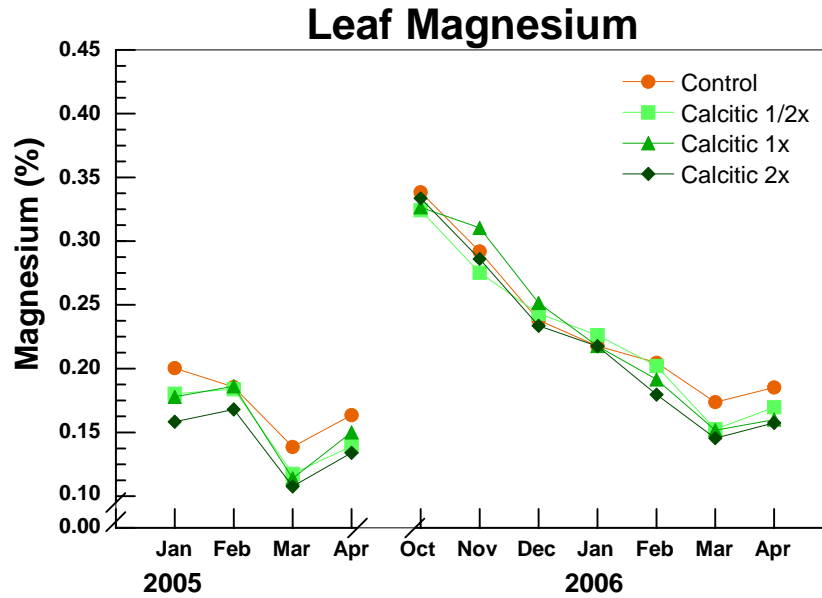


Figure 12. Magnesium concentrations in stockpiled tall fescue leaves harvested monthly from plots treated with 0x, 1/2x, 1x, and 2x the recommended rate of calcitic limestone at SWC. Means (n=6). LSD (P<0.05) = 0.021 for comparing treatments within a month and LSD (P<0.05) = 0.007 for comparing months within the same treatment.

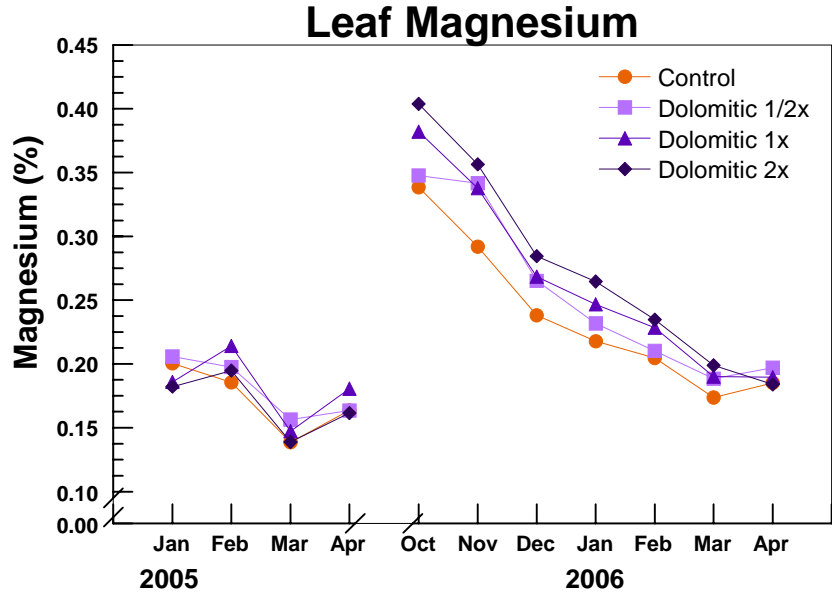


Figure 13. Magnesium concentrations in stockpiled tall fescue leaves harvested monthly from plots treated with 0x, 1/2x, 1x, and 2x the recommended rate of dolomitic limestone at SWC. Means (n=6). LSD (P<0.05) = 0.021 for comparing treatments within a month and LSD (P<0.05) = 0.007 for comparing months within the same treatment.

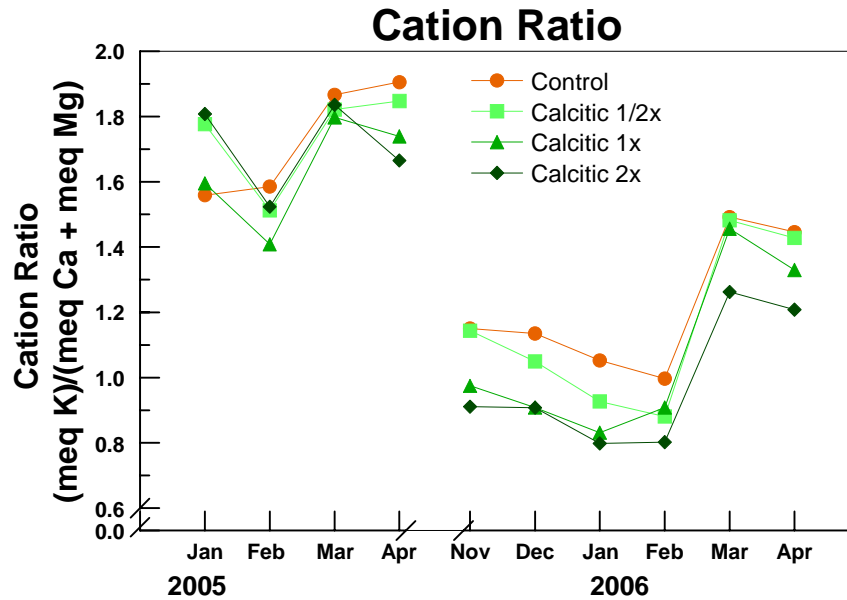


Figure 14. Cation ratio of stockpiled tall fescue leaves harvested monthly from plots treated with 0x, 1/2x, 1x, and 2x the recommended rate of calcitic limestone at SWC. Means.

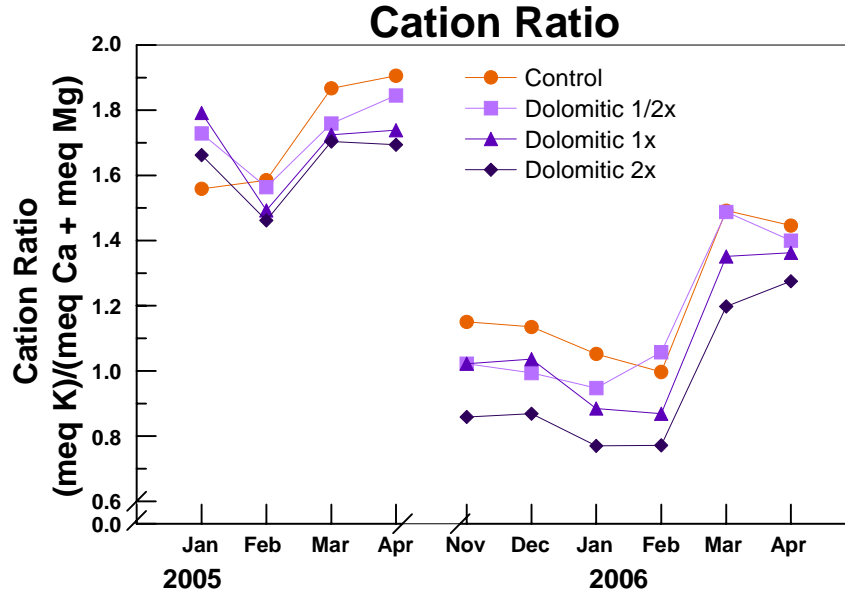


Figure 15 . Cation ratio of stockpiled tall fescue leaves harvested monthly from plots treated with 0x, 1/2x, 1x, and 2x the recommended rate of dolomitic limestone at SWC. Means.

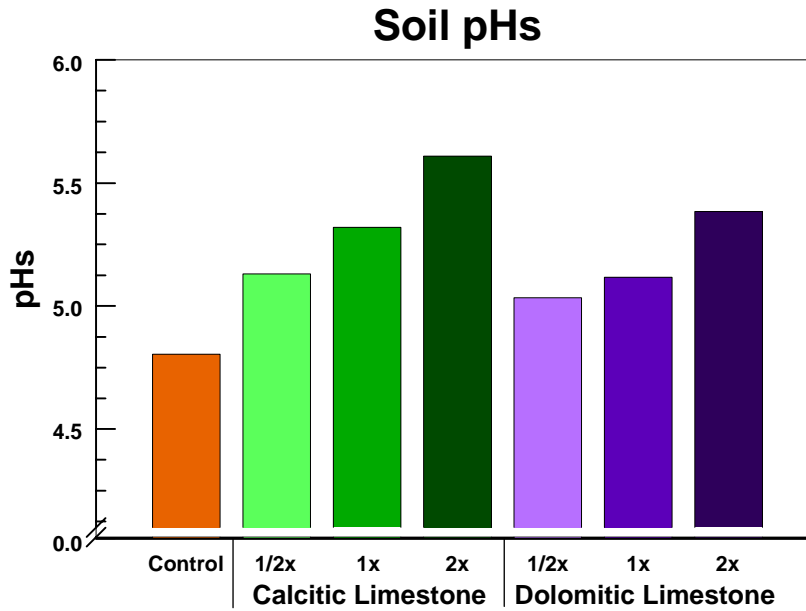


Figure 16. Soil pHs 19 months after application of 0x, 1/2x, 1x, and 2x the recommended rate of calcitic and dolomitic limestone at SWC. Means (n=6). LSD (P<0.05) = 0.202 for comparing treatments.

Soil pHs

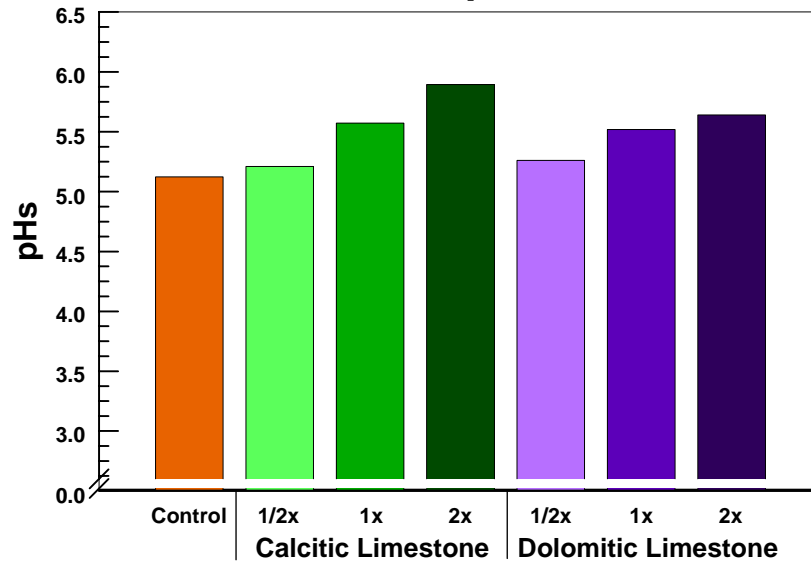


Figure 17. Soil pHs 19 months after application of 0x, 1/2x, 1x, and 2x the recommended rate of calcitic and dolomitic limestone at BREC. Means (n=6). LSD (P<0.05) = 0.131 for comparing treatments.

Soil Neutralizable Acidity

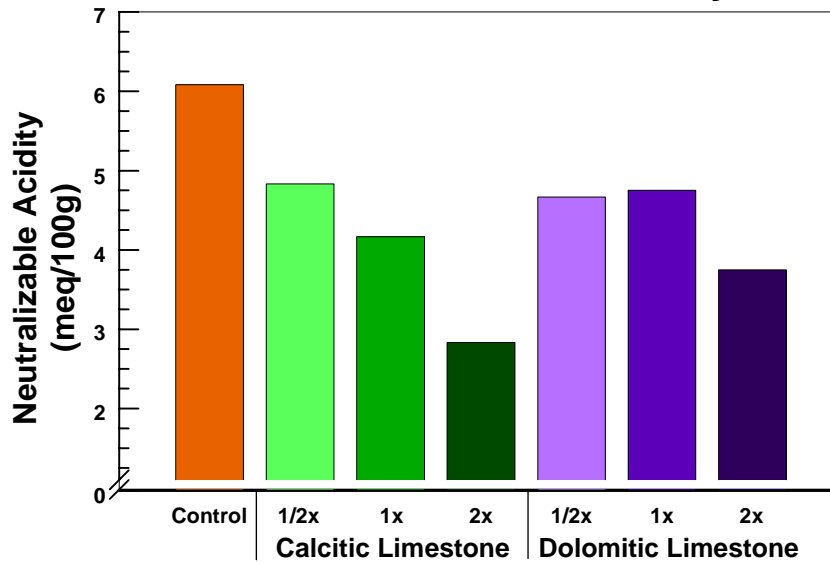


Figure 18. Soil neutralizable acidity 19 months after application of 0x, 1/2x, 1x, and 2x the recommended rate of calcitic and dolomitic limestone at SWC. Means (n=6). LSD (P<0.05) = 0.848 for comparing treatments.

Soil Neutralizable Acidity

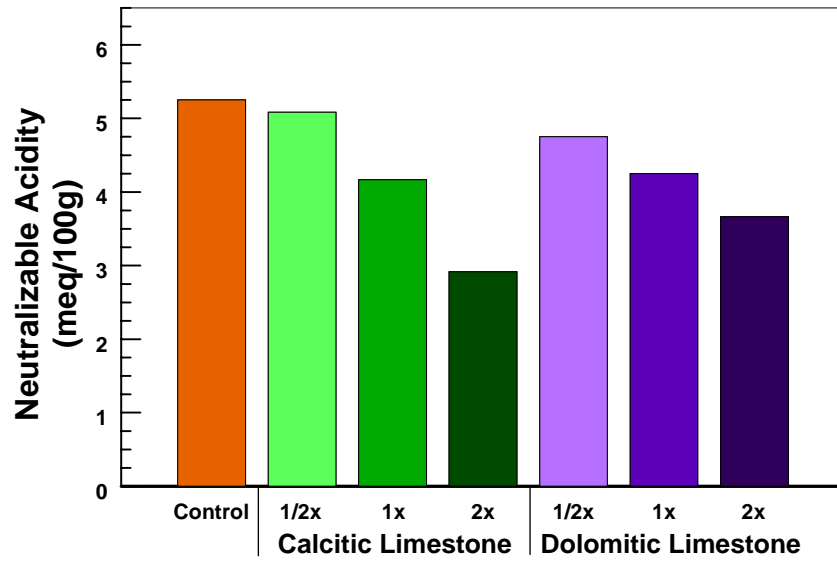


Figure 19. Soil neutralizable acidity 19 months after application of 0x, 1/2x, 1x, and 2x the recommended rate of calcitic and dolomitic limestone at BREC. Means (n=6). LSD (P<0.05) = 0.587 for comparing treatments.

Soil Organic Matter

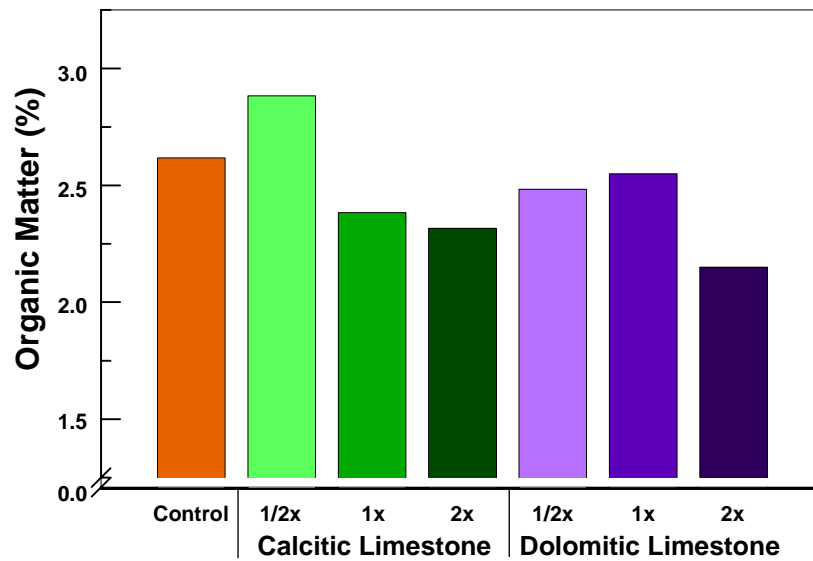


Figure 20 Soil organic matter content 19 months after application of 0x, 1/2x, 1x, and 2x the recommended rate of calcitic and dolomitic limestone at SWC. Organic matter is 58% carbon. Means (n=6). LSD (P<0.05) = 0.410 for comparing treatments.

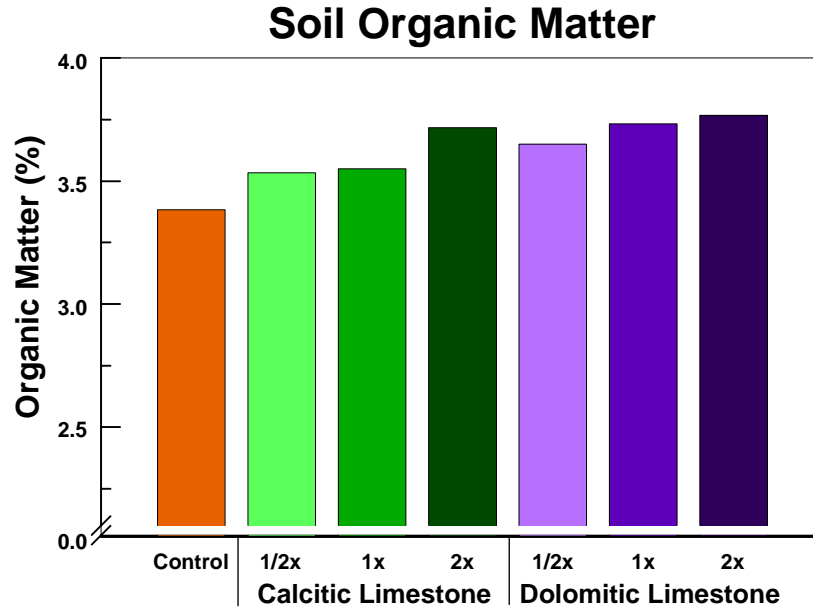


Figure 21. Soil organic matter content 19 months after application of 0x, 1/2x, 1x, and 2x the recommended rate of calcitic and dolomitic limestone at BREC. Organic matter is 58% carbon. Means (n=6). LSD (P<0.05) = 0.347 for comparing treatments.

LITERATURE CITED

1. Hamilton, Elizabeth, Dale Blevins, and Randall Miles. 2006. Liming Stockpiled Tall Fescue Changed Macro- and Micronutrient Concentrations. Agronomy Abstracts, p. 61.

REPORT CONTENTS

	Page
1. Report information and tonnage summary	2
2. Table 1-Registered Producers and samples	3
3. Table 2-Distributors and samples	18
4. Quarry and Producer Permits 2007-08	22
5. The Influence of Liming Acid Soils on Plant Available Phosphorus, Magnesium, and Aluminum Levels in Tall Fescue	25

This report also available on the web at:

[HTTP://aes.missouri.edu/pfcs](http://aes.missouri.edu/pfcs)

**Agricultural Liming Materials
Control Services
University of Missouri-Columbia
Columbia, MO 65211-8080**

Address Service Requested